

PITBULL

Installation Instructions



Table of Contents

Antenna Versions.....	2
Required Tools & Accessories	3
Battery Installation	5
Starlink Mini Installation.....	6
BoostCharge Installation.....	10
Router Installation	11
Connection – Router can vary	13
Final Assembly	23
Operational Setup	26
Battery Operation and Safety Guidelines	29
Disclaimer	30
Support Contact & Version #.....	30

Antenna Versions

The Pitbull case antenna comes in multiple versions with different features, listed below.

Pitbull G2	Pitbull L
<ul style="list-style-type: none">• 4x RJ-45 Ports• AC Power Port• 4x 40mm Fans• Battery Operated – OmniCharge Ultimate+ Custom Battery, OP2FPA01 (battery not included)	<ul style="list-style-type: none">• 4x RJ-45 Ports• AC Power Port• 4x 40mm Fans• Accessory Tray
Pitbull G2B	
<ul style="list-style-type: none">• 4x RJ-45 Ports• AC Power Port• 4x 40mm Fans• Battery Operated – OmniCharge Ultimate+ Custom Battery, OP2FPA01 (battery installed in case)	

Required Tools & Accessories

The following tools (not provided) are required for the installation of the Pitbull case antenna:

- Philips Screwdriver
- 3/32" Hex Driver

The tables below list the required accessories for the G2, G2B, and L versions of the Pitbull case antenna.

	Pitbull G2	Pitbull L
Provided with Antenna	<ul style="list-style-type: none"> • PTA0164 Pan Head Screws, 4 pcs • PTA0399-TL Pan Head Screws, 33 pcs • PTA1158 Black Oval Head Screws with Washers, 22 pcs • PTA1165 Socket Head Screws, 4 pcs • PTA0445 Ethernet Cords, 4 pcs * • PTA0632 USB-C to DC Cable, 1 pc • PTA0999 DC to 4-Pin Molex Cable, 1 pc • PTA1000 DC to 6-Pin Molex Cable, 1 pc • PTA0957 Sticker Set, 1 pc • Battery Tray for OmniCharge Ultimate+ Custom Battery Pack • PTA1101C Starlink Mini Mount Bracket, 1 pc • PTA1119 Display Plate, 1 pc • PTA1146 NEMA 5-15 Plug to 5-15 Socket, 6 FT*** • PTA1164 Belkin BoostCharge Pro, 1 pc • PTA1221 100W USB-C Charge, 1 pc • Velcro Strips, Qty. 3 • Cable Ties • SMA Wrench 	<ul style="list-style-type: none"> • PTA0164 Pan Head Screws, 4 pcs • PTA0399-TL Pan Head Screws, 33 pcs • PTA1158 Black Oval Head Screws with Washers, 22 pcs • PTA1165 Socket Head Screws, 4 pcs • PTA0445 Ethernet Cords, 4 pcs * • PTA0632 USB-C to DC Cable, 1 pc • PTA0999 DC to 4-Pin Molex Cable, 1 pc • PTA1000 DC to 6-Pin Molex Cable, 1 pc • PTA0957 Sticker Set, 1 pc • Accessory Tray, 1 pc • PTA1101C Starlink Mini Mount Bracket, 1 pc • PTA1119 Display Plate, 1 pc • PTA1146 NEMA 5-15 Plug to 5-15 Socket, 6 FT*** • PTA1164 Belkin BoostCharge Pro, 1 pc • Velcro Strips, Qty. 3 • Cable Ties • SMA Wrench
To be purchased by Customer	<ul style="list-style-type: none"> • PTA1182 OmniCharge Ultimate+ Custom Battery Pack (OP2FPA01) • Ethernet Cords, 3 pcs ** 	<ul style="list-style-type: none"> • Ethernet Cords, 3 pcs **
	<ul style="list-style-type: none"> • Router Options <ul style="list-style-type: none"> ○ Ericsson R980 ○ Ericsson R1900 ○ Peplink MAX BR1 Pro 5G ○ Peplink MAX BR2 Pro 5G • Starlink Options <ul style="list-style-type: none"> ○ Starlink Mini 	

* For connecting the router to the ports on the case

** Optional, for connecting external devices to the case, length as required by customer

*** For connecting to NEMA 5-15P outlet on case

	Pitbull G2B
Provided with Antenna	<ul style="list-style-type: none"> • PTA0164 Pan Head Screws, 4 pcs • PTA0399-TL Pan Head Screws, 33 pcs • PTA1158 Black Oval Head Screws with Washers, 22 pcs • PTA1165 Socket Head Screws, 4 pcs • PTA0445 Ethernet Cords, 4 pcs * • PTA0632 USB-C to DC Cable, 1 pc • PTA0999 DC to 4-Pin Molex Cable, 1 pc • PTA1000 DC to 6-Pin Molex Cable, 1 pc • PTA0957 Sticker Set, 1 pc • Battery Tray for OmniCharge Ultimate+ Custom Battery Pack • PTA1182 OmniCharge Ultimate+ Custom Battery Pack • PTA1101C Starlink Mini Mount Bracket, 1 pc • PTA1119 Display Plate, 1 pc • PTA1146 NEMA 5-15 Plug to 5-15 Socket, 6 FT*** • PTA1164 Belkin BoostCharge Pro, 1 pc • PTA1221 100W USB-C Charge, 1 pc • Velcro Strips, Qty. 3 • Cable Ties • SMA Wrench
To be purchased by Customer	<ul style="list-style-type: none"> • Ethernet Cords, 3 pcs ** <ul style="list-style-type: none"> • Router Options <ul style="list-style-type: none"> ○ Ericsson R980 ○ Ericsson R1900 ○ Peplink MAX BR1 Pro 5G ○ Peplink MAX BR2 Pro 5G • Starlink Options <ul style="list-style-type: none"> ○ Starlink Mini

* For connecting the router to the ports on the case

** Optional, for connecting external devices to the case, length as required by customer

*** For connecting to NEMA 5-15P outlet on case

Battery Installation

Step 1: Mount the OmniCharge Ultimate+ Custom Battery Pack to the Cover Plate (**Pitbull G2 only**).

- A. This step only applies to the Pitbull G2 and has already been performed for the Pitbull G2B.
- B. Cut and remove the flaps from the sides of the battery pack, shown in Figure 1.
- C. Insert the battery pack into the battery tray, as shown in Figure 2.
- D. Secure the Battery Tray with the Qty. 3 PTA0399-TL screws, as shown in Figure 2.



Figure 1: Remove the flaps from the sides of the battery.

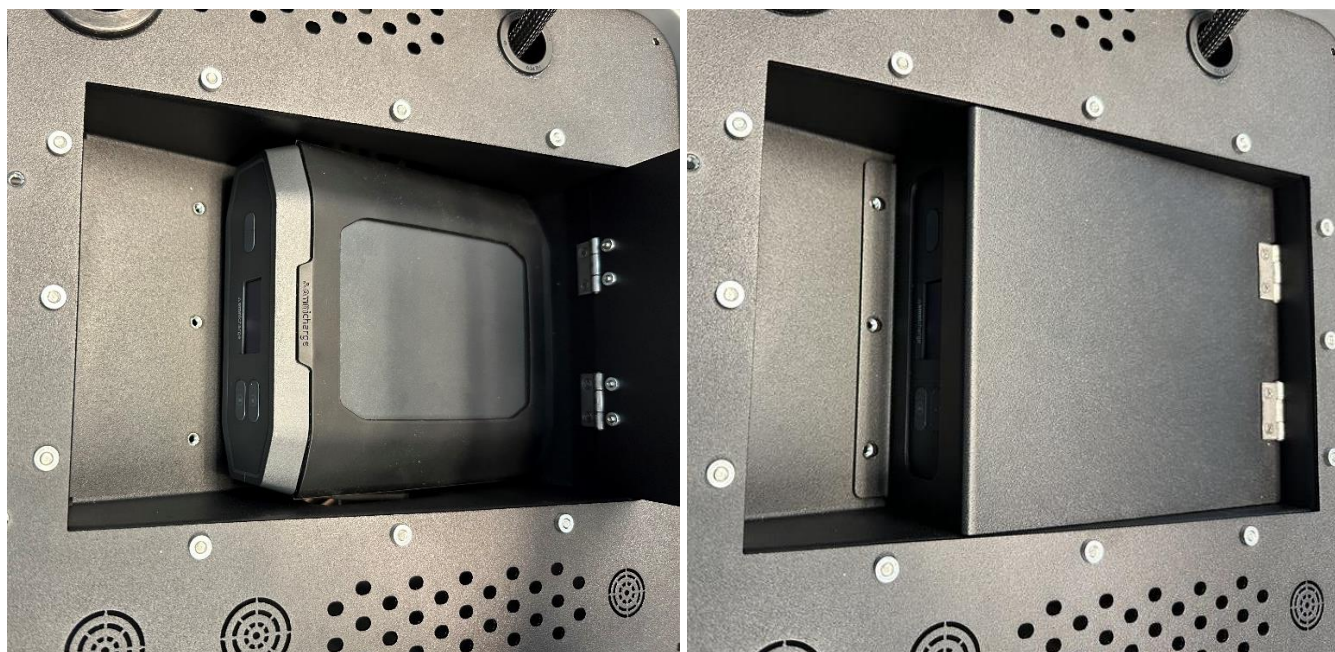


Figure 2: Insert the battery pack into the battery tray and secure the Battery Tray.

Starlink Mini Installation

Step 1: Mount the Starlink Mini to the Starlink Mini Mount.

- A. Insert the mount into the Starlink Mini.
- B. Ensure the mount is inserted fully into the Starlink Mini.



Figure 3: Mount the Starlink Mini to the Starlink Mini Mount

- C. Use the Qty. 4: PTA1165 Socket Head Screws to secure the Starlink Mini to the Starlink Mini Mount

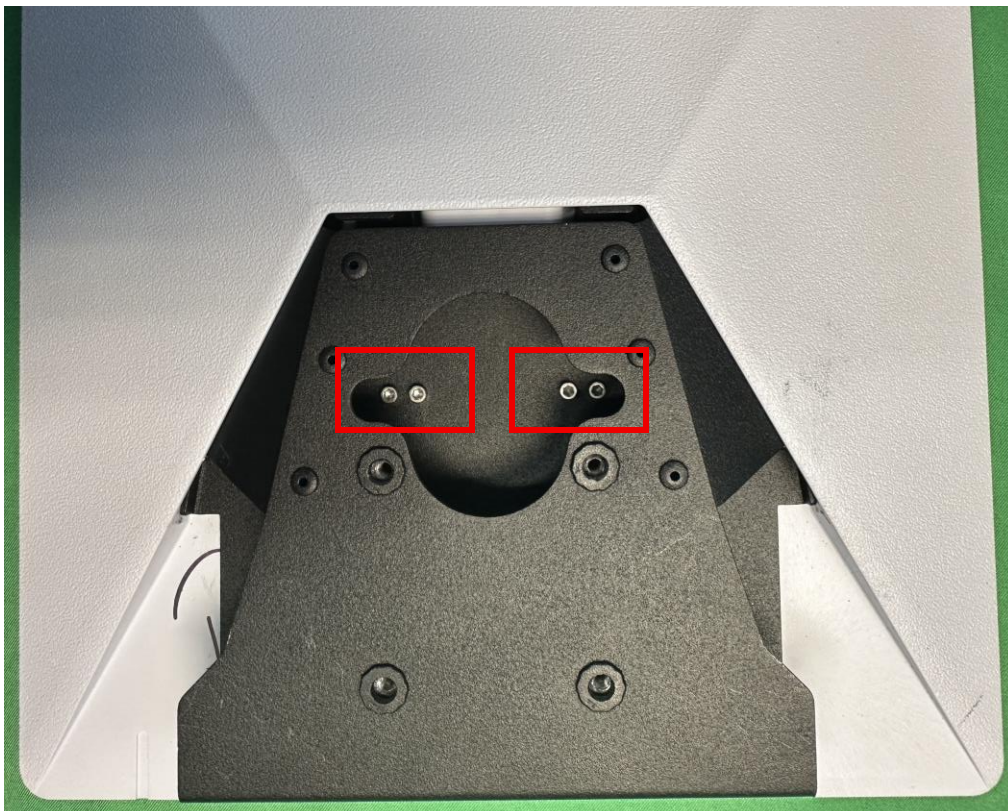


Figure 4: Mount the Starlink Mini to the Starlink Mini Mount

Step 2: Mount the Starlink Mini Mount and Starlink Mini to the Starlink Mini Cover Plate

- A. Insert the Starlink Mini into the Lid of the Pitbull, as shown below.

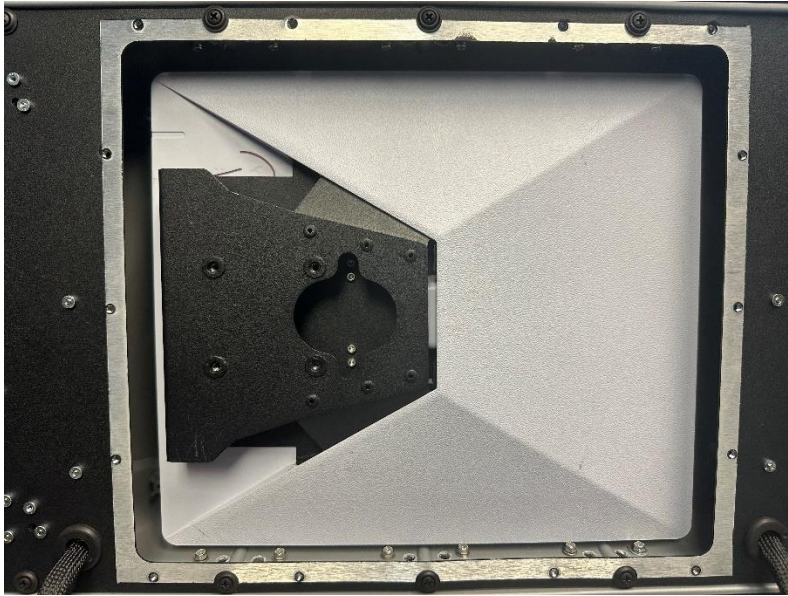


Figure 5: Mount the Starlink Mini to the Starlink Mini Cover Plate

- B. Pass the ethernet and power cables through the bottom of the mount as shown below.



Figure 6: Mount the Starlink Mini to the Starlink Mini Cover Plate

C. Install the ethernet and power cables to the Starlink Mini as shown.
Note: Ensure that the cables are fully inserted into the Starlink Mini as shown.



Figure 7: Insert the ethernet and power cables to the Starlink Mini

D. Align the Mount with the Cover Plate and secure using the Qty. 4: PTA0164 screws.
Note: Ensure that the fan cables are not pinched when securing the cover plate.

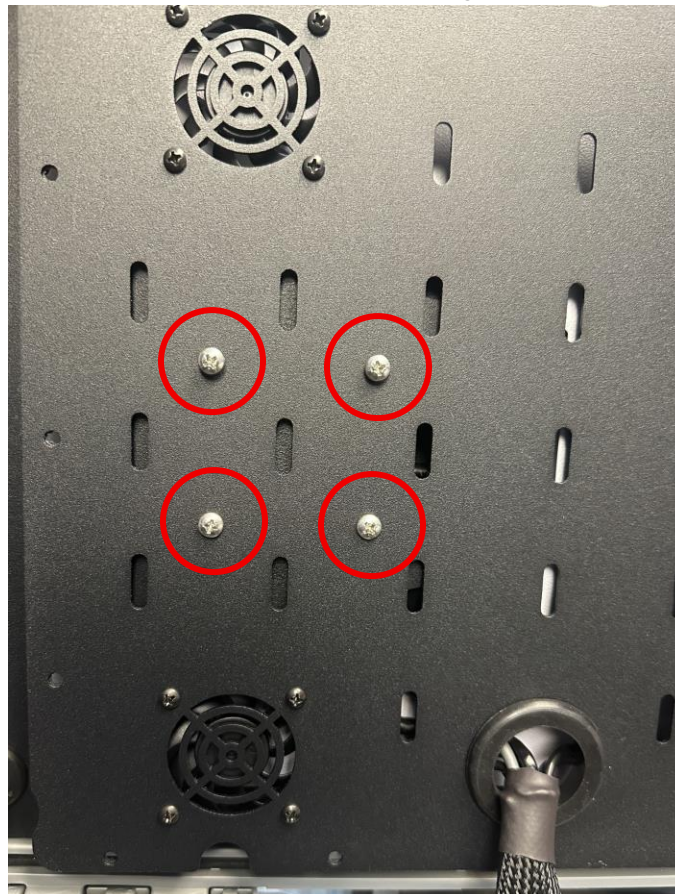


Figure 8: Secure the mount to the cover plate

E. Secure the cover plate to the top plate using the Qty. 14: PTA0399-TL screws as shown:

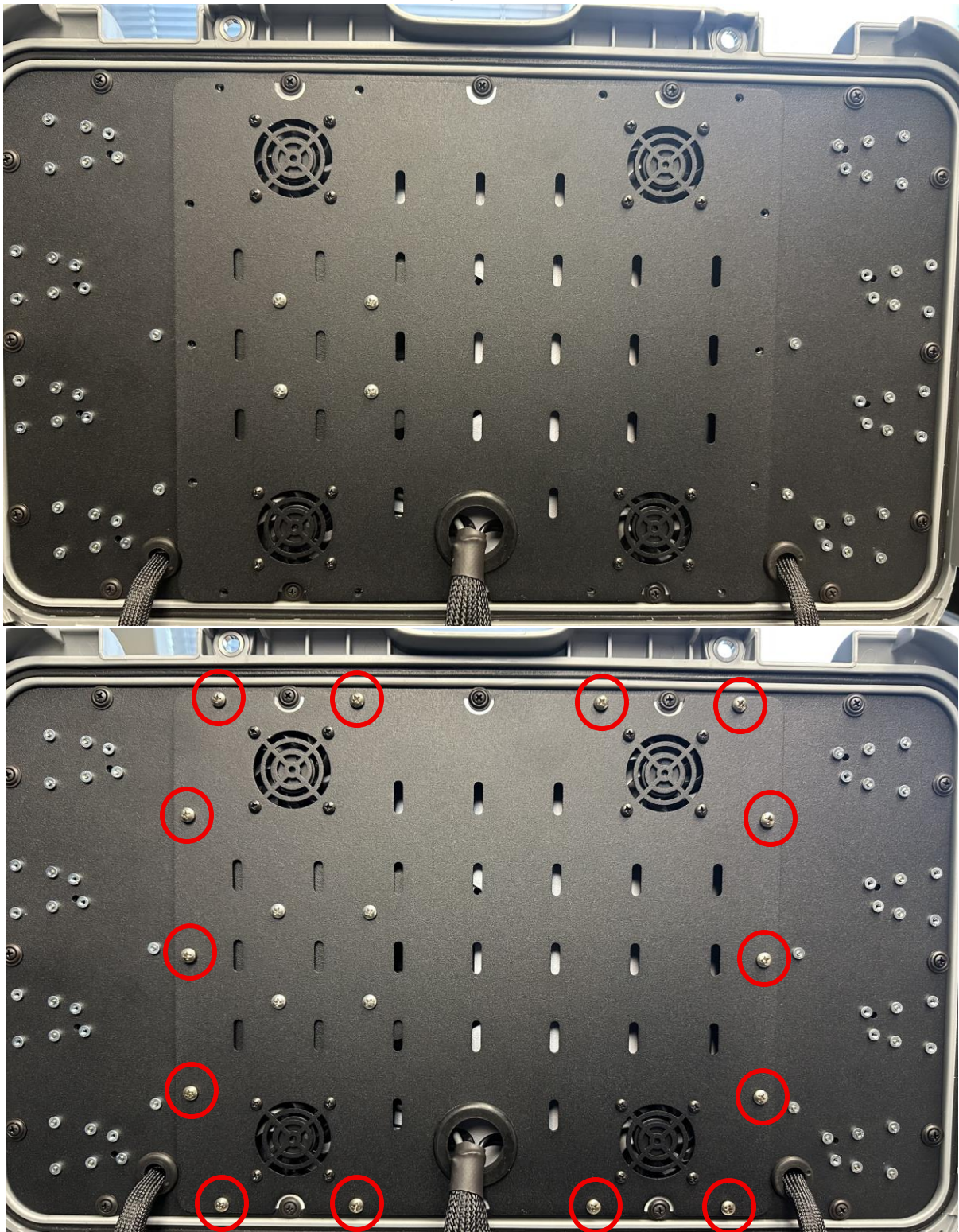


Figure 9: Secure the cover plate to the top plate

BoostCharge Installation

Step 1: Install the PTA1164 BoostCharge Pro to the Router Plate as shown.

- A. Use the provided Velcro Strips to secure the PTA1164 BoostCharge Pro to the router plate.

Note: Ensure that the Boostcharge is installed on the center-right of the plate as shown below to allow fit under the Battery Tray. The BoostCharge should be installed **at least 2.5"** away from the center-right wall of the enclosure.

Please note that when using the Peplink MAX BR2 Pro 5G, the Boostcharge Pro will need to be installed the bottom wall in the center.

- B. Follow the Connection Guide for cable installation – please note that the Starlink Mini cable needs to be installed to the 90W USB-C Connection (left-most on the Belkin BoostCharge Pro).

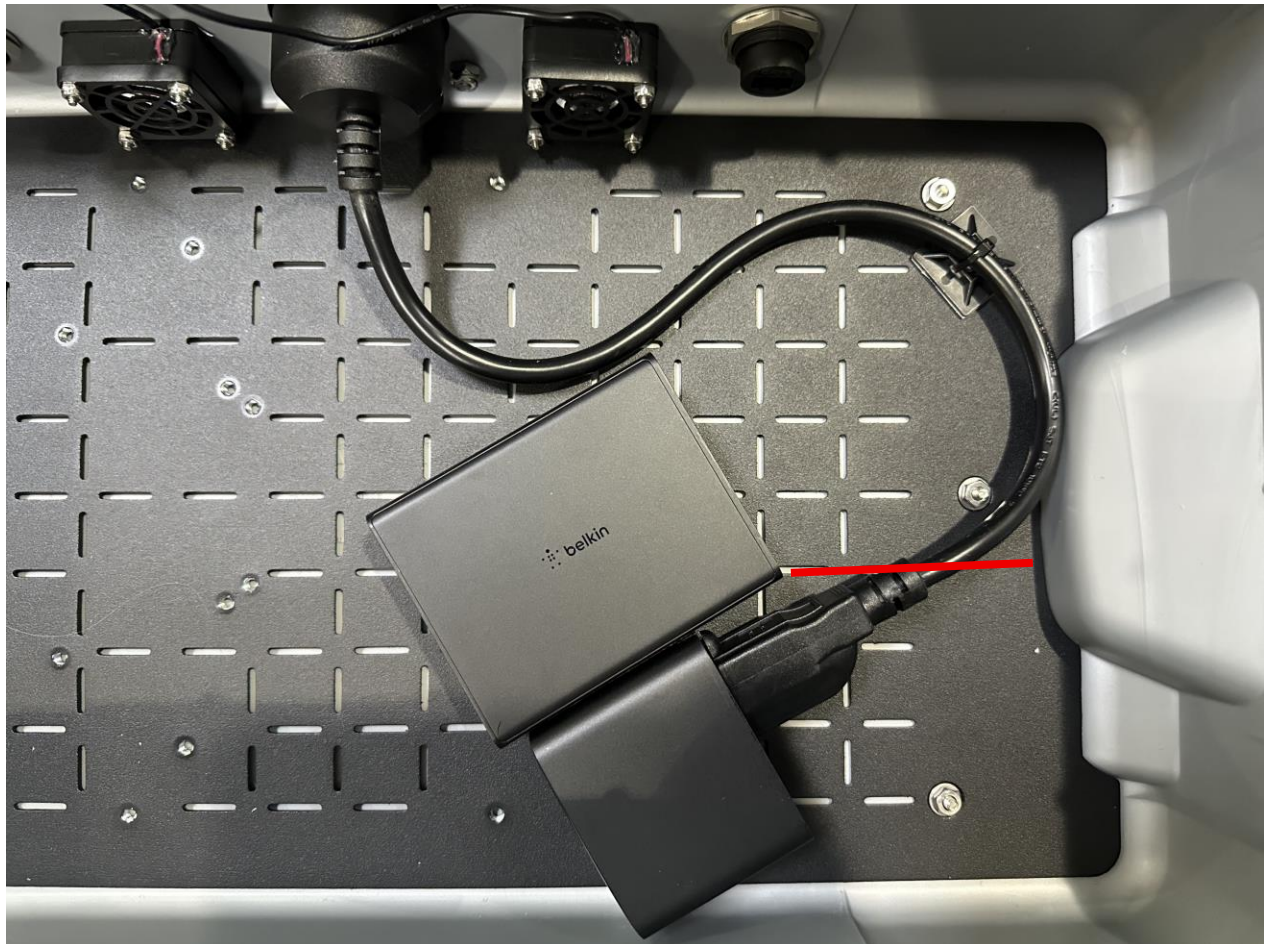


Figure 10: Install the BoostCharge Pro to the Router Plate

Step 2: Install the PTA1221 100W Charger to the Router Plate as shown above.

- A. This step only applies to the Pitbull G2 and has already been performed for the Pitbull G2B.
- B. Plug the 100W Charger into the AC Cable on the Case.
- C. Use the provided Velcro Strips to secure the PTA1221 100W Charger to the router plate.
- D. Use the provided cable ties to secure the cable as shown above.

Router Installation

Step 1: Mount the router to the router plate

- A. Use the Qty. 4: PTA0399-TL screws to easily install the router to the Router Plate.



Figure 11: Ericsson R1900 Router installed on Router Plate

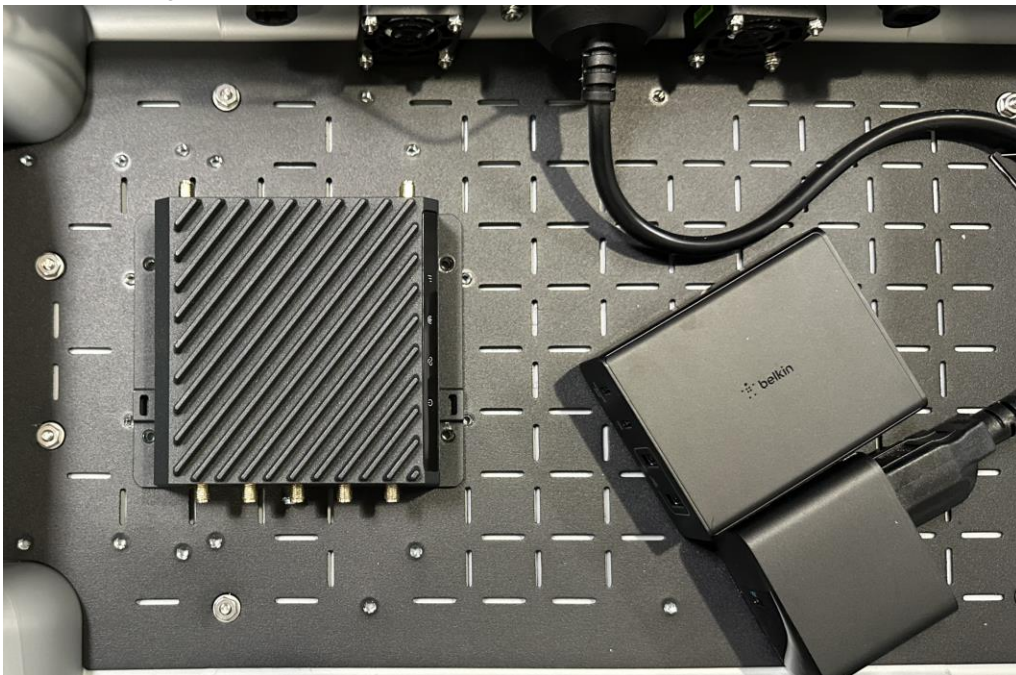


Figure 12: Ericsson R980 Router installed

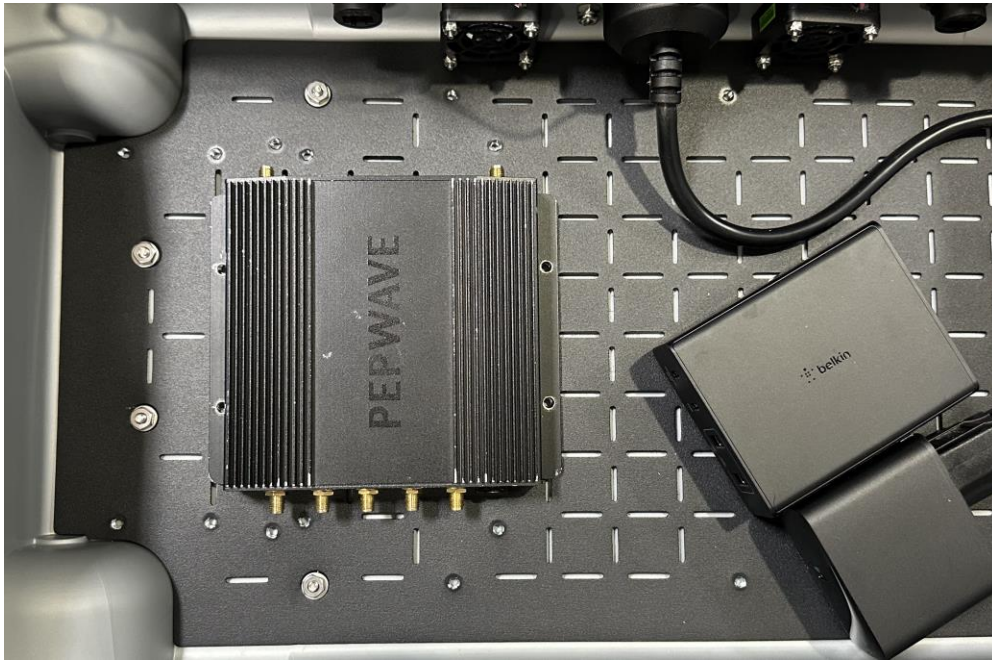


Figure 13: Peplink BR1 Max Pro 5G Router installed on Router Plate

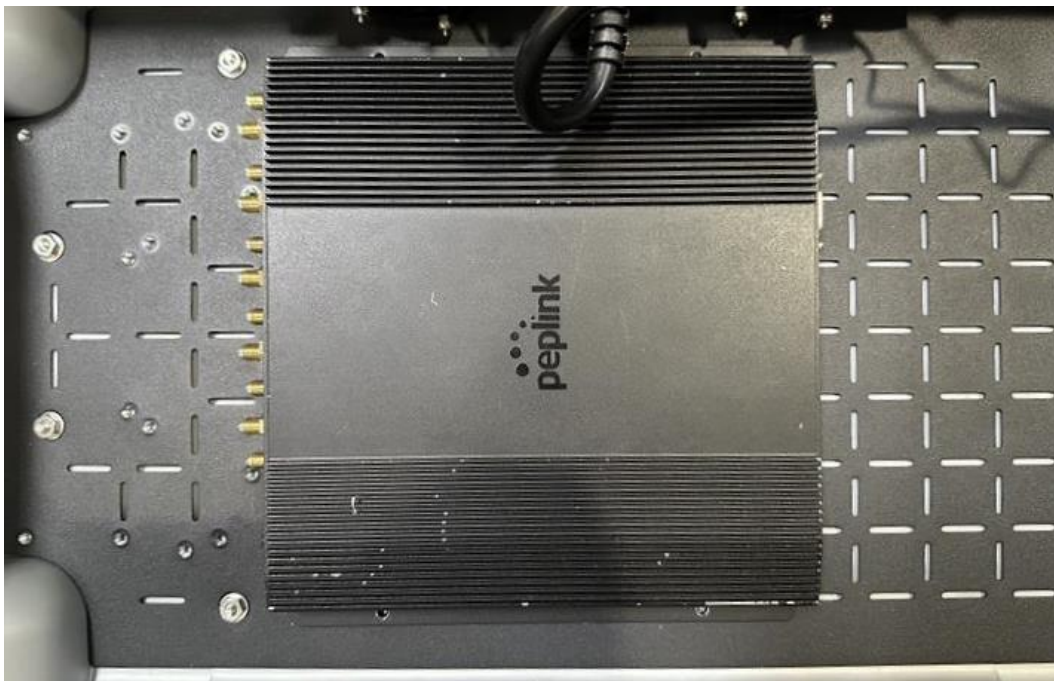


Figure 14: Peplink BR2 Max Pro 5G Router installed on Router Plate

Step 2: Connect the cables following the Connection Diagram shown on Page 13.

Connection – Router can vary

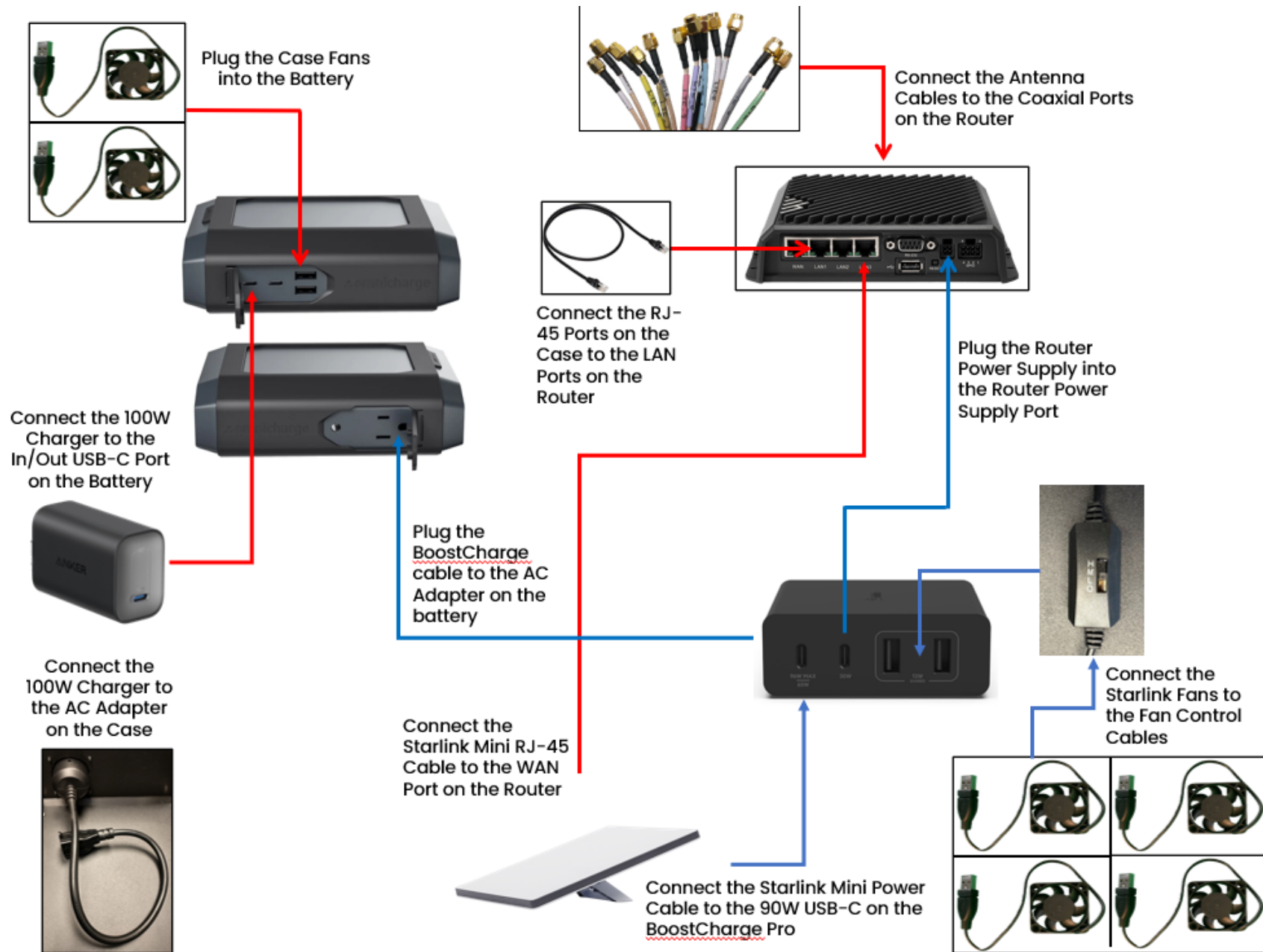


Figure 15: Connection Diagram for Pitbull G2

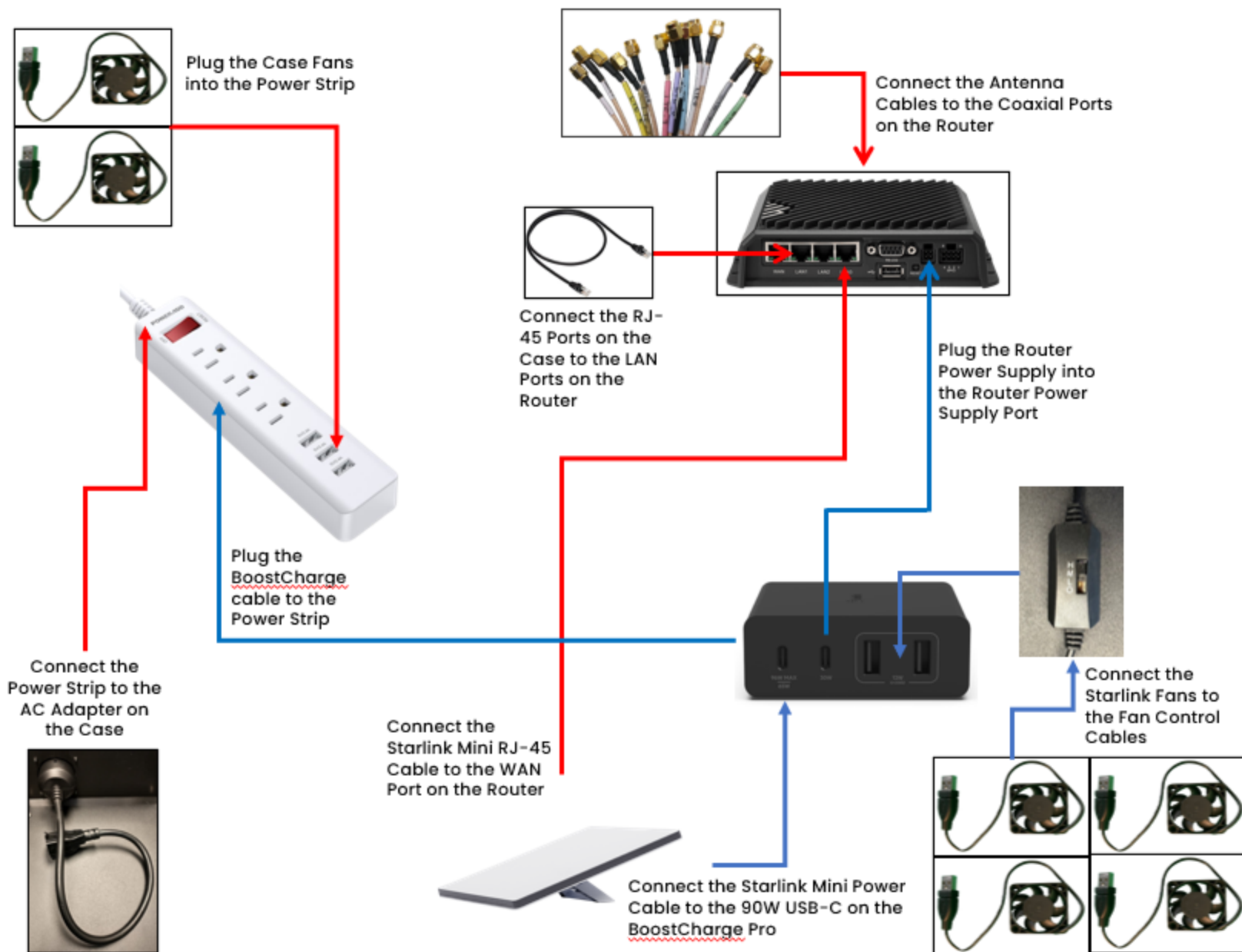


Figure 16: Connection Diagram for Pitbull L

Step 1: Connect the antenna cables to the router.

- A. Use canned air or isopropyl alcohol to clean all the connectors to ensure that there is no dust in the terminals.
- B. Connect the antenna cables to the designated terminals on the router, as shown in the tables and images below.

Ericsson R1900	
Antenna Cable	Router Terminal
CELL 1	MAIN
CELL 2	DIV
CELL 3	MIMO1
CELL 4	MIMO2
CELL 5	MAIN 0 on modem
CELL 6	AUX 0 on modem
CELL 7	MAIN 1 on modem
CELL 8	AUX 1 on modem
GPS	GNSS
Wi-Fi 1	2.4/5GHz WIFI 1
Wi-Fi 2	2.4/5GHz WIFI 2
Bluetooth	BT

Ericsson R980	
Antenna Cable	Router Terminal
CELL 3	CELL 1 left
CELL 1	CELL 2 middle left
GPS	GNSS middle
CELL 4	CELL 3 middle right
CELL 2	CELL 4 right
Wi-Fi 1	Wi-Fi 1 left
Wi-Fi 2	Wi-Fi 2 right

Peplink MAX BR1 Pro 5G	
Antenna Cable	Router Terminal
CELL 1	Cellular A
CELL 2	Cellular B
CELL 3	Cellular C
CELL 4	Cellular D
GPS	GPS
Wi-Fi 1	Wi-Fi Antenna A
Wi-Fi 2	Wi-Fi Antenna B

Peplink MAX BR2 Pro 5G	
Antenna Cable	Router Terminal
CELL 1	Cellular 1A
CELL 2	Cellular 1B
CELL 3	Cellular 1C
CELL 4	Cellular 1D
CELL 5	Cellular 2A
CELL 6	Cellular 2B
CELL 7	Cellular 2C
CELL 8	Cellular 2D
GPS	GPS
Wi-Fi 1	Wi-Fi A
Wi-Fi 2	Wi-Fi B

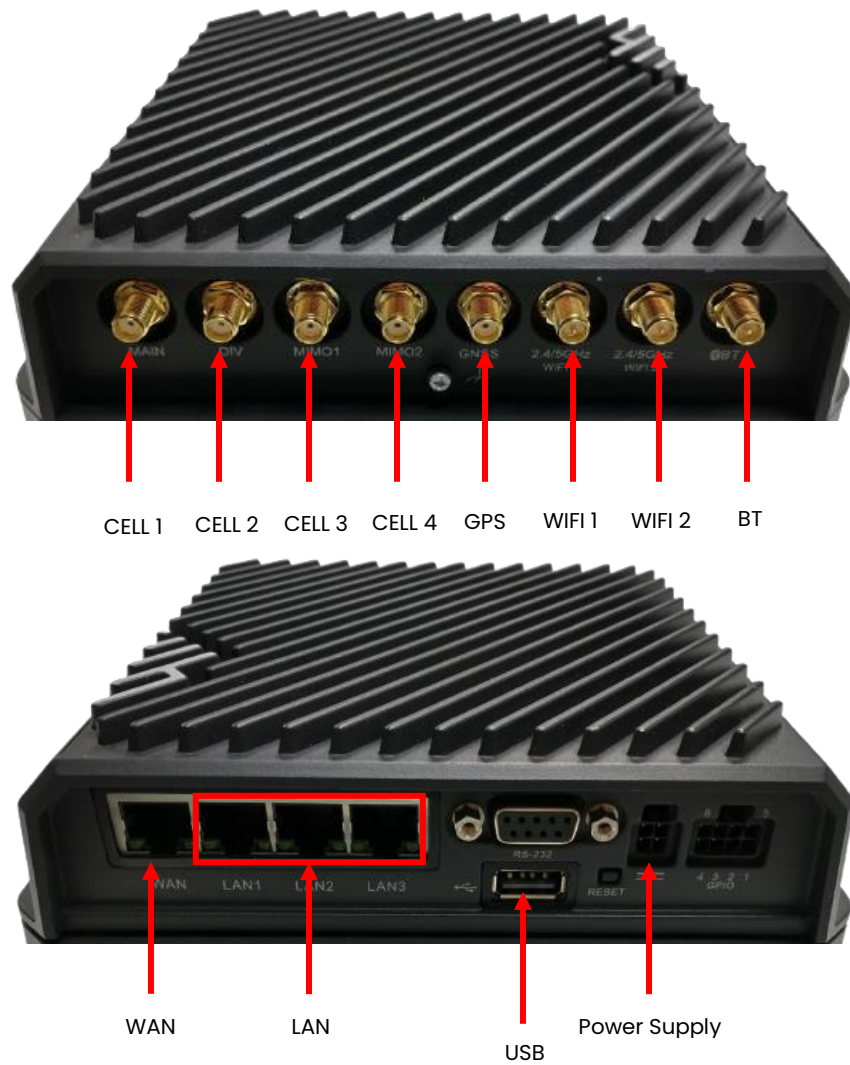


Figure 17: Ericsson R1900 Connections



Figure 18: Ericsson R980 Connections

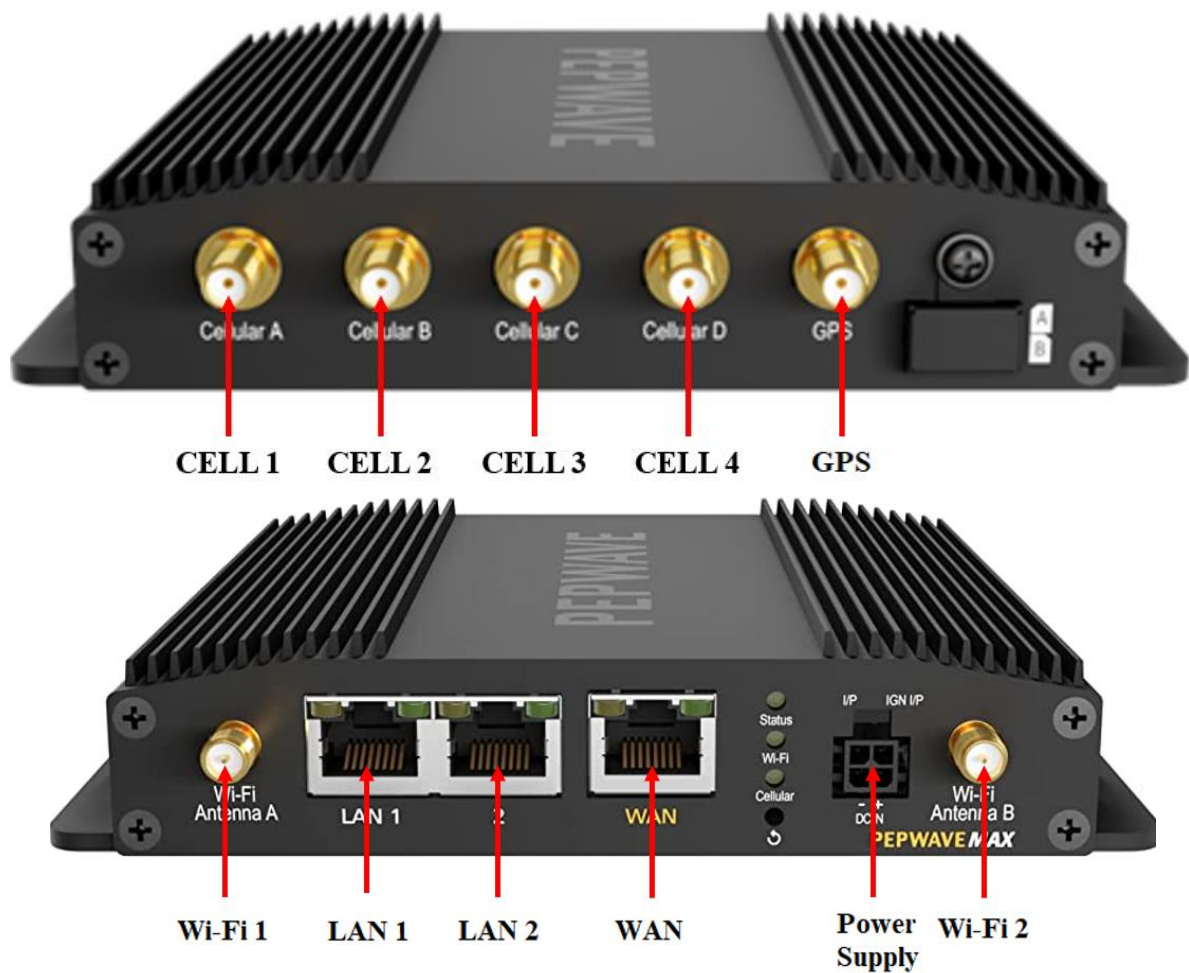


Figure 19: Peplink MAX BR1 Pro 5G Connections

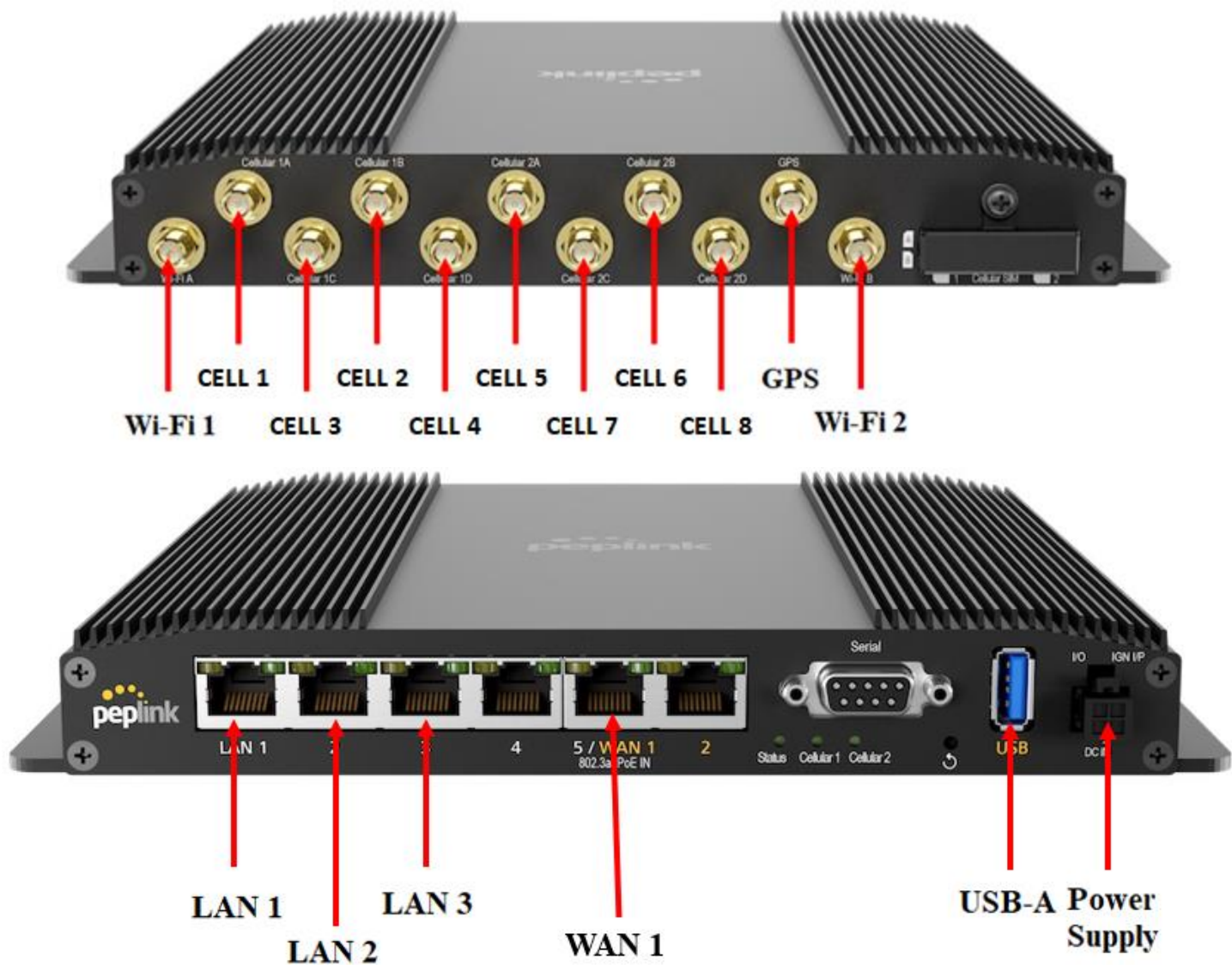


Figure 20: Peplink MAX BR2 Pro 5G Connections

Step 2: Connect the 100W Battery charger to the Battery.

- A. This step only applies to the Pitbull G2 and has already been performed for the Pitbull G2B.
- B. Connect the USB-C Cable into the 100W Charger.
- C. Connect the other side of the USB-C Cable into the Battery USB-C Port as shown below.

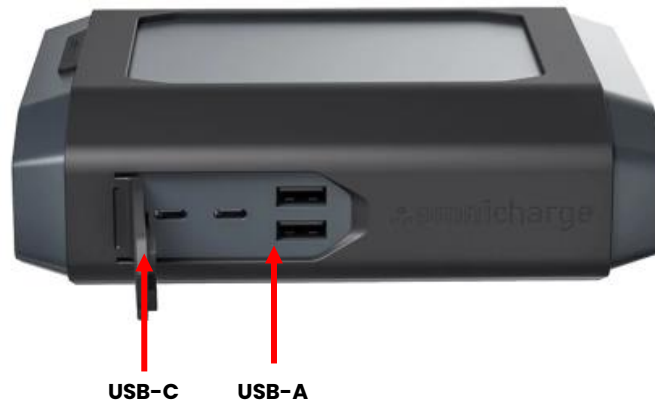


Figure 21: Omnicharge Ultimate+ Battery Pack Connections (Left Side).

Step 3: Connect the Fans from the Case to the Battery (Pitbull-G2) or to the Power Adapter (Pitbull-L)

- A. This step has already been performed for the Pitbull G2B.
- B. For the Pitbull-G2, connect the Fans from the bottom of the case to the USB-A ports on the battery as shown above.
- C. For the Pitbull-L, connect the Fans from the bottom of the case to the USB-A ports on the power strip shown below:

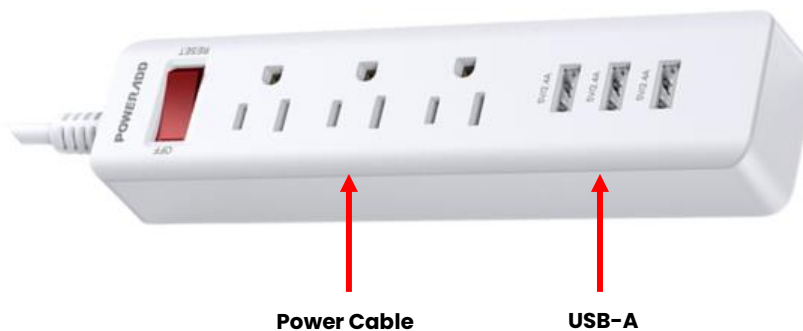


Figure 22: Surge Protector Connections

Step 4: Connect the Fans from the Starlink Mini Plate to the BoostCharge Pro.

- A. Connect the Fans from the Starlink Mini Plate to the Fan Speed Control cables.

Note: Ensure that the Fan Speed is set to 'H'.



Figure 23: Starlink Mini Fan Control

B. Connect the fan cables to the BoostCharge Pro as shown below:

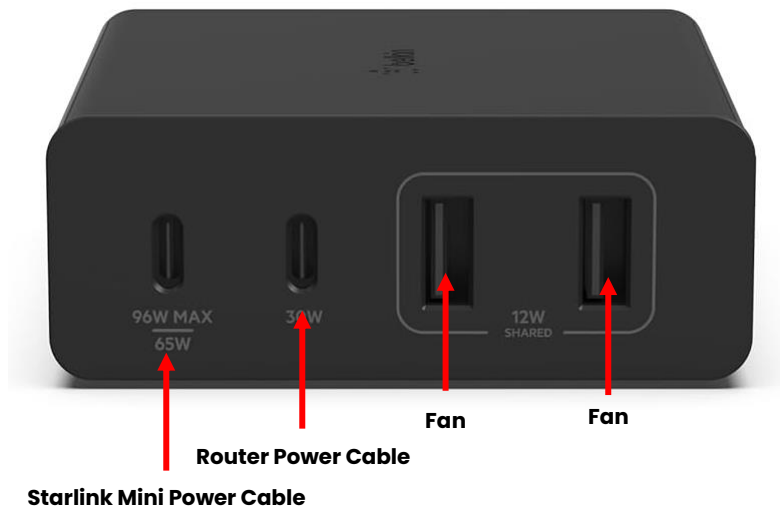


Figure 24: Belkin BoostCharge Pro Connections

Step 5: Connect the Starlink Mini Power Cable to the BoostCharge Pro.

- A. The Starlink Mini Power Cable must be plugged into the Left-Most '96W MAX/65W' Port on the BoostCharge Pro as shown above.

Step 6: Connect the PTA0632 USB-C to DC Power Cable to the BoostCharge Pro.

- A. Connect the PTA0632 USB-C to DC Power Cable to the BoostCharge Pro.
- B. Connect the PTA0999 DC to 4-Pin Molex cable to the PTA0632 Cable.
- C. Connect the 4-Pin Molex Cable to the Router to power the router.

Step 7: Connect the Belkin BoostCharge Power Cable to the BoostCharge Pro.

- A. This step has already been performed for the Pitbull G2B.
- B. For the Pitbull-G2, connect the Power Cable to the AC Port on the battery.
- C. For the Pitbull-L, connect the Power Cable to the AC Port on the Power Strip.



Figure 25: Omnicore Ultimate Battery Pack Connections (Left Side).

Step 8: Connect the Power Strip to the AC Adapter on the Case.

- A. This step only applies to the Pitbull-L.

Step 9: Connect the router to the RJ-45 ports on the case using ethernet cords.

- A. Connect the Starlink Mini Ethernet Cable to the WAN port on the Router.
- B. Connect the provided ethernet cords to the LAN ports on the router, shown in Figures 17 – 20.
- C. Connect the other ends of the ethernet cords from the router to the RJ-45 ports on the case.

Step 10: Install the Panel Mount Stickers on the outside of the case.

- A. Use the PTA0957 Sticker Sheet shown in Figure 26 to label the RJ-45/Ethernet and AC Power Panel Mounts, as shown in Figure 27.

LAN 1	AC Power
LAN 2	DATA
LAN 3	USB-C
LAN 4	USB-A
WAN	DC Power

Figure 26: Panel Mount Sticker Sheet



Figure 27: Pitbull G2/L Case with Stickers installed

Final Assembly

Step 1: Make sure all the cables and devices are properly connected.

- A. Inspect every cable connection and ensure that no connections are loose.
- B. Use cable ties or other wire management to neatly bundle the cables.

Note: Ensure that the antenna cables are not excessively bent ($1/2''$ minimum bend radius).

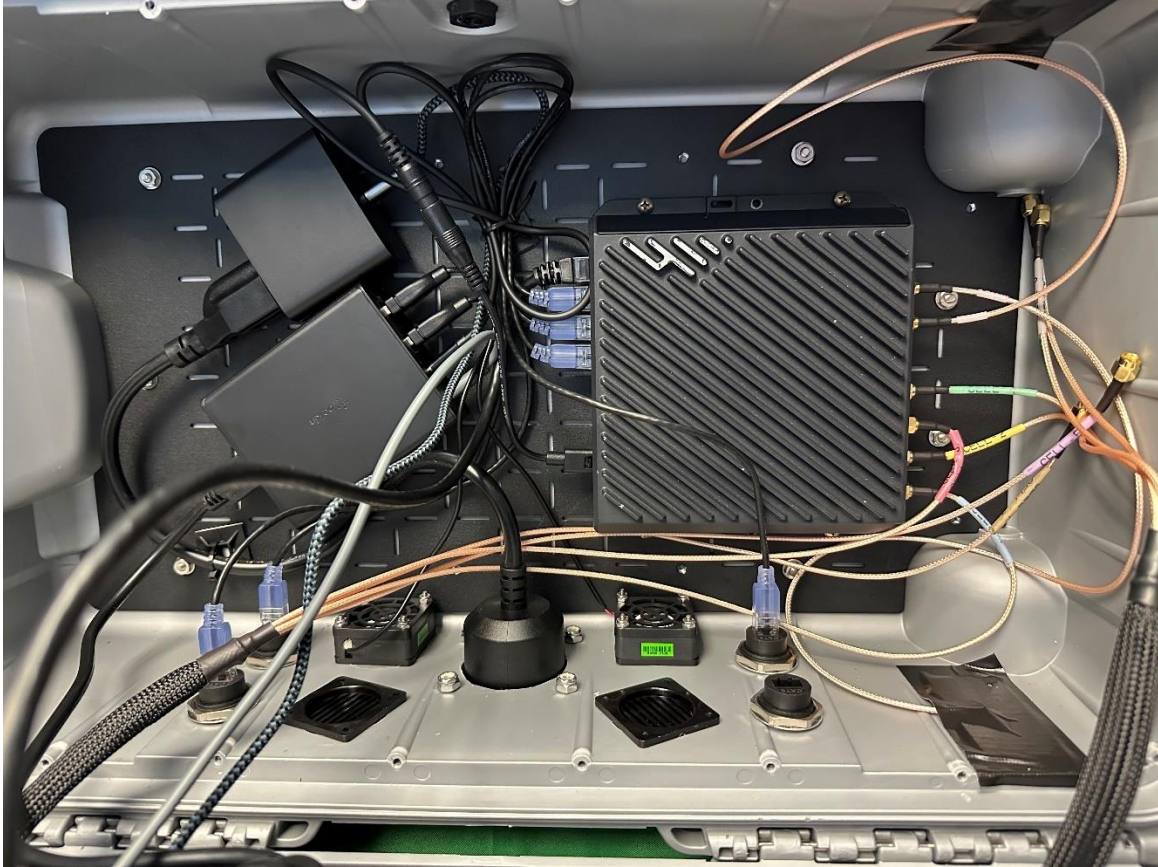


Figure 28: Fully Connected Pitbull-G2 with Ericsson R1900 Router

Step 2: Fasten the cover plate to the case.

- A. Place the cover plate onto the bottom half of the case. **Ensure that no cables are pinched between the cover plate and the case.**
 - I. Fasten the cover plate to the case using the Qty. 22: PTA1158 black oval head screws with washers provided in the kit, as shown below:

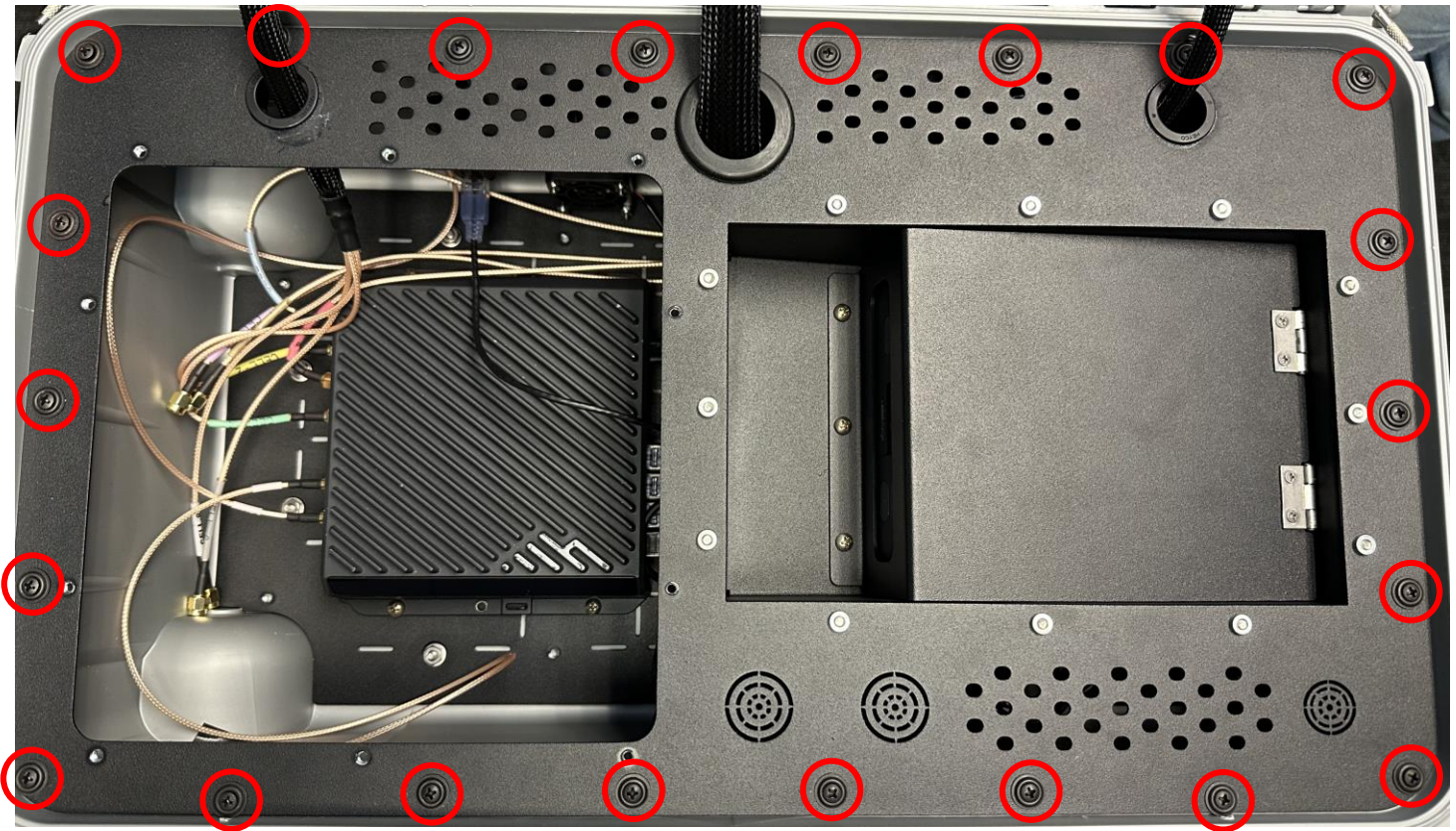


Figure 29: Fasten the cover plate to the case using PTA1158 screws.

Step 3: Fasten the display cover to the top plate.

- A. Remove the protective covering from **both** sides of the PTA1119 Display Plate.
- B. Fasten the router plate to the cover plate using the Qty. 10: PTA0399-TL Pan Head Screws.

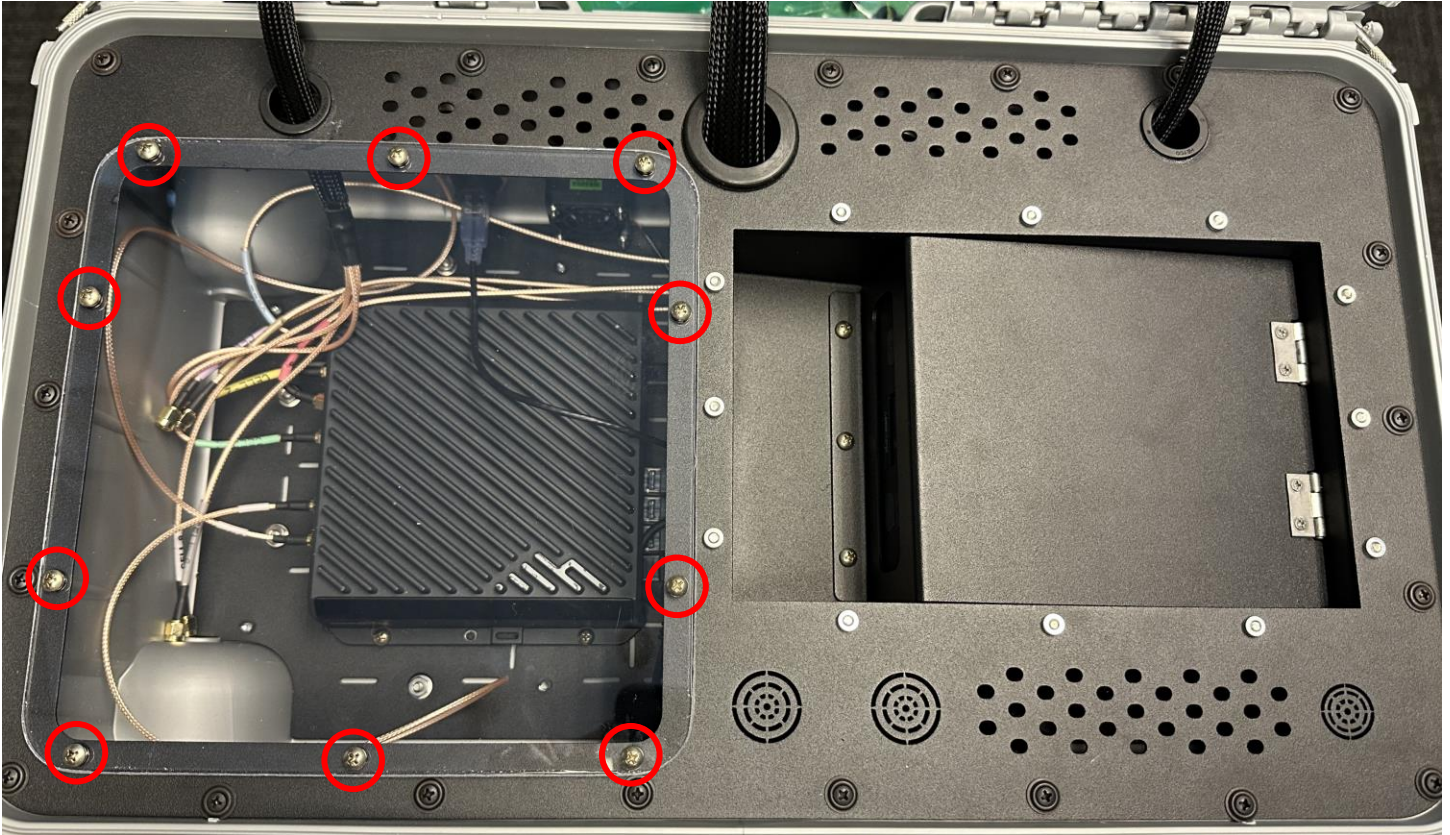


Figure 30: Fasten the router plate to the cover plate using PTA0164 screws.

Operational Setup

Step 1: Open the fan and vent caps.

- A. This step only applies to Pitbull cases purchased **prior** to 06/01/25.
- B. Before turning the router ON, always open the fan and vent caps. The type of cap may vary.
- C. **Ensure that the antenna is away from any liquids when the caps are open.**



Figure 31: Open the fan and vent caps.

Step 2: Power on the router.

- A. Connect the power cable to a power outlet and confirm the router has turned on.

Step 3: Connect the router to a computer.

- A. Use an ethernet cable to connect a computer to one of the LAN ports on the router.

Router	Page
Ericsson	Step 4, Page 27
Peplink	Step 5, Page 28

Step 4: Login to Ericsson NetCloud.

- A. This step only applies for Ericsson Routers.
- B. Open a web browser on the computer and type 192.168.0.1 into the address bar. This will bring up the Ericsson NetCloud login, shown in Figure 32.
- C. Login to Ericsson NetCloud. The username is “admin”, and the password is found on the router, shown in Figure 33.

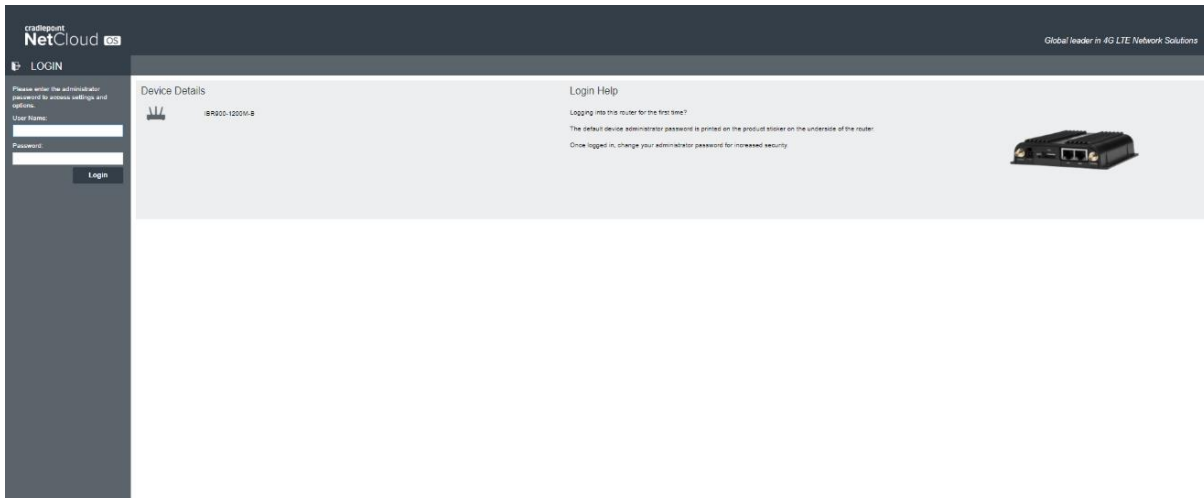


Figure 32: Access Ericsson NetCloud.



Figure 33: Ericsson NetCloud Login Password

Step 5: Login to PEPWAVE.

- D. This step only applies for Peplink Routers.
- A. Open a web browser on the computer and type 192.168.50.1 into the address bar. This will bring up the PEPWAVE, shown in Figure 34.
- B. Login to PEPWAVE. The username is "admin", and the password is "admin".

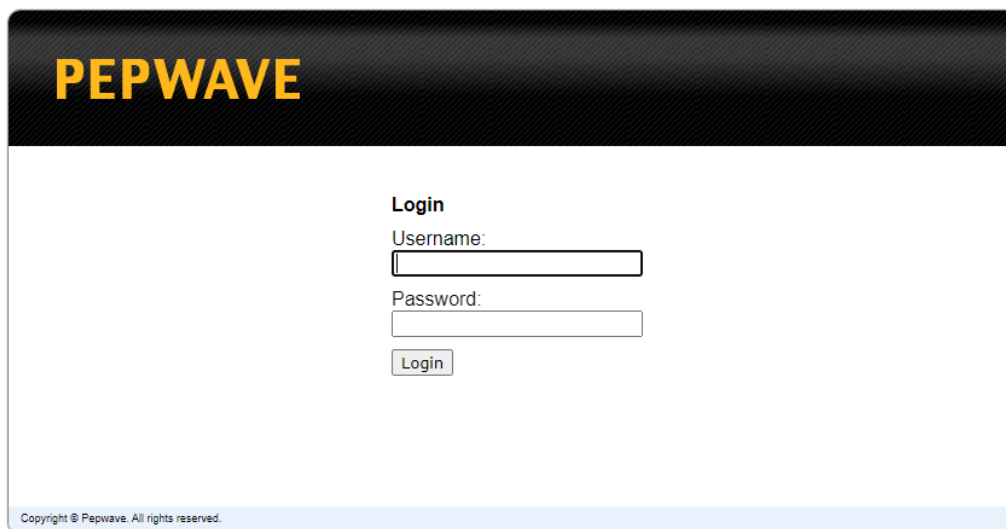



Figure 34: Access PEPWAVE.

Antenna setup is complete!

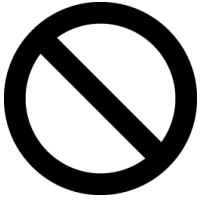
For best antenna performance, operate the case with the lid closed and the case oriented with the lip on top.

Make sure the fan and vent caps are open while using the case.

Battery Operation and Safety Guidelines

- A. To manually power ON/OFF, press and hold the power button  for 3 seconds. All LED lights/display should turn ON/OFF.
- B. Make sure the battery is at least 30% charged before operating. If the battery is not charged, charge the battery using the USB-C Port on the Case.
- C. Recharging the battery pack can be done with a Type-C PD Charger with at least 45W of power and up to 100W maximum.
 - I. Please note that the 100W charger provided is recommended when using the Starlink Mini.
- D. While plugged in and charging, the battery pack will allow pass-through charging to continue powering any devices that are plugged in to the battery pack.
- E. The battery will automatically shut off after 12 hours, regardless of user input.
- F. Warning: if the battery pack exceeds a safe operating temperature due to insufficient ventilation or a high-temperature environment, the unit will automatically shut OFF.
- G. **Keep out of reach of children.**
- H. **The product may become uncomfortably warm, reaching 104°F (40°C) under extended, high-power usage. While using the product, make sure to keep it away from materials that may be affected by high temperatures.**
- I. **Hold on carefully when inserting or removing a cable. Make sure not to force or bend cables when inserting them into the charging ports.**
- J. **Avoid inserting any foreign objects into the ports.**
- K. **Do not attempt to open, alter, or modify the unit.**
- L. **Do not operate in temperatures under 50°F (10°C) or over 104°F (40°C).**
- M. **Do not expose the product to wet conditions such as water, rain, or snow.**
- N. **Failure to follow these safety guidelines may cause personal injury and/or property damage to the product. It may also void the product warranty.**

Disclaimer



CAUTION

To comply with FOC RF Exposure requirements in section 1.1310 of the FCC Rules, antennas used with this device must be installed to provide a separation distance of at least 20 cm from all persons to satisfy RF exposure compliance.



DO NOT:

- Do not operate the transmitter when someone is within 24 inches of the antenna
- Do not install the antenna or mast assembly on a windy day
- Do not install the mast close to power lines as it can cause serious injuries or death



WARNING

This document is for general information only. It cannot be used for a warranty. Performance and other data contained were obtained in internal lab tests under ideal conditions, and performance may vary due to network variables, different network environments and other conditions. Parsec Technologies Inc. will not accept any liability for any damage caused by an antenna due to unknown variables. Parsec Technologies Inc. reserves the right to change, modify, transfer, or otherwise revise this publication without notice, and the most current version of the publication will be applicable.

Support Contact & Version



Parsec Technologies

972-804-4600

support@parsec-t.com

Last Revised: 07.02.2025