



MobileMustHave
MOBILE LIFESTYLE SOLUTIONS

Ideal for

- FirstNet/First Responders
- Transportation/Fleet
- Remote Video Monitoring
- Mobile Broadband

Belgian Shepherd PRO Series



- 4X4 MIMO LTE
- 4X4 MIMO WI-FI
- GPS
- IP67 RATED

Features

- 5G
- WI-FI 6
- 600 MHz - 6 GHz*
- HIGH EFFICIENCY
- HIGH PERFORMANCE

*See inside for details

Product Description

Belgian Shepherd antennas are high-performance, 5G, 600 MHz-6GHz antennas, available with 4X4 MIMO LTE, 4X4 MIMO WI-FI and GPS. The Belgian Shepherd Series antennas are perfect for mobile and fixed wireless applications.

The Belgian Shepherd Series are rugged, IP67 rated antennas with high gain and performance.

Patent pending.



Frequency Ranges

5G/4G/LTE Frequency Range Wi-Fi Frequency Range

617 - 894 MHz	2400 - 2483.5 MHz
1695 - 2700 MHz	4900 - 5900 MHz
3300 - 3800 MHz	
5150 - 5925 MHz	

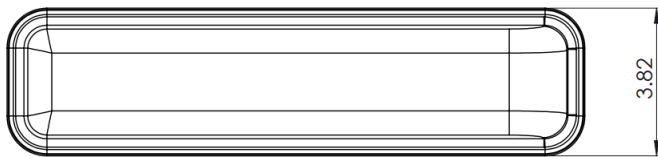
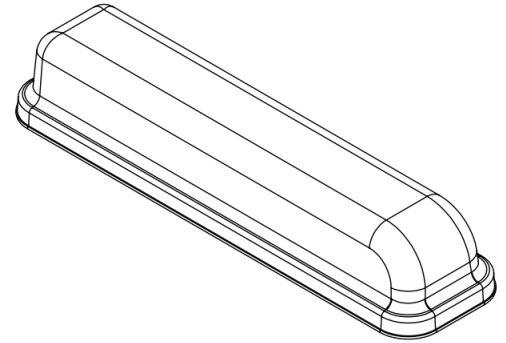
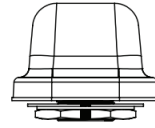
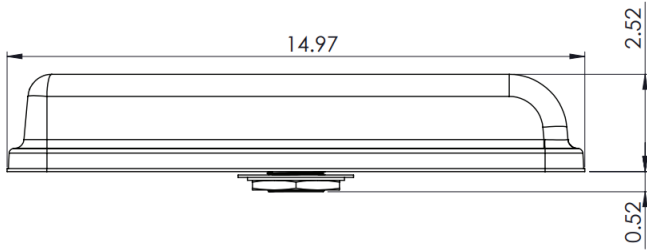


Specifications

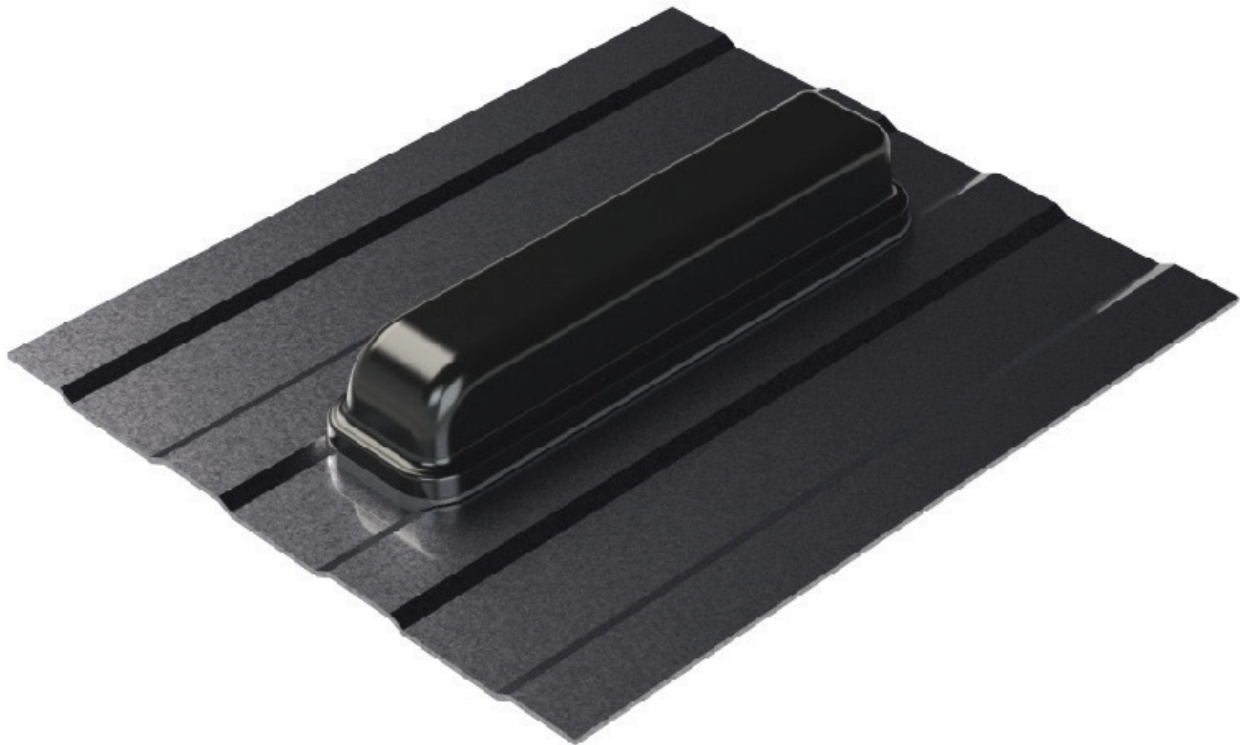
5G*/4G/LTE Bands (US Carriers)	
AT&T	2, 4, 5*, 14, 17, 29, 30, 48, 66, 77*
Verizon	2*, 4, 5* 13, 48, 66*, 77*
T-Mobile	2, 4, 12, 41*, 48, 66, 71*, 77*
Mechanical	
Dimensions	2.44 inch height x 3.75 inch width x 14.90 inch length
Mounting Hole	Single 1.5 inch
Environmental	
Operating Temperature	-40°C to 85°C
Ingress Protection	IP67 waterproof



Product Dimensions



Product Image



Electrical Specifications

ID	Port	Parameters	Units	Typ.
Radiated Efficiency	LTE -1,2,3,4	617-894 MHz		70
	LTE -1,2,3,4	1710 - 2700 MHz	%	80
	LTE -1,2,3,4	3400 - 4000 MHz		60
	LTE -1,2,3,4	5150 - 5925 MHz		50
	GPS	1575.42 MHz		80
	Wi-Fi -1,2,3,4	2400 - 2483.5 MHz		70
	Wi-Fi -1,2,3,4	4900 - 5900 MHz		70
Peak Gain	LTE -1,2,3,4	617-894 MHz		
	LTE -1,2,3,4	1710 - 2700 MHz	dBi	7
	LTE -1,2,3,4	3400 - 4000 MHz		7
	LTE -1,2,3,4	5150 - 5925 MHz		5
	GPS	1575.42 MHz		6
	Wi-Fi -1,2,3,4	2400 - 2483.5 MHz		7
	Wi-Fi -1,2,3,4	4900 - 5900 MHz		8
Return Loss (50 Ω)	LTE -1,2,3,4	617-894 MHz		
	LTE -1,2,3,4	1710 - 2700 MHz	dB	10
	LTE -1,2,3,4	3400 - 4000 MHz		7
	LTE -1,2,3,4	5150 - 5925 MHz		5
	GPS	1575.42 MHz		12
	Wi-Fi -1,2,3,4	2400 - 2483.5 MHz		10
	Wi-Fi -1,2,3,4	4900 - 5900 MHz		8
Isolation	LTE -1,2,3,4	617-894 MHz		
	LTE -1,2,3,4	1710 - 2700 MHz	dB	18
	LTE -1,2,3,4	3400 - 4000 MHz		20
	LTE -1,2,3,4	5150 - 5925 MHz		20
	Wi-Fi -1,2,3,4	2400 - 2483.5 MHz		17
	Wi-Fi -1,2,3,4	4900 - 5900 MHz		18
Polarization	LTE			
	Wi-Fi			RHCP
Max Input Power	LTE,Wi-Fi		Watts	5
GNSS Preamp Gain	GPS		dB	28
GNSS Preamp Voltage	GPS		V	2.2 to 5.0
RF Connector	LTE, GPS			SMA(M)
	Wi-Fi			RP-SMA
RF Cable Type	LTE, Wi-Fi			LSR200
	GPS			LSR100
Notes: <ol style="list-style-type: none"> 1. Electrical specifications based on antenna with a 2 ft. x 2 ft. external ground plane. 2. Isolation and return loss does not include cable loss. 				



Ordering

Standard Antennas

Configurations	Part Number	Description
4:1	PRO4BS4L15B	4 LTE, 15ft cable, Black
	PRO4BS4L15BS	4 LTE, 15ft cable, Black, Short Bolt
	PRO4BS2L14G15B	2 LTE, Band 14, GPS, 15ft cable, Black
	PRO4BS2L14G15BS	2 LTE, Band 14, GPS, 15ft cable, Short Bolt, Black
6:1	PRO6BS2L142WG15B	2 LTE, Band 14, 2 Wi-Fi, 1 GPS, 15ft cable, Black
	PRO6BS2L142WG15BS	2 LTE, Band 14, 2 Wi-Fi, 1 GPS, 15ft cable, Short Bolt, Black
7:1	PRO7BS4L2WG15B	4 LTE, 2 Wi-Fi, 1 GPS, 15ft cable, Black
	PRO7BS4L2WG15BS	4 LTE, 2 Wi-Fi, 1 GPS, 15ft cable, Black, Short Bolt
8:1	PRO8BS4L2WBG15B	4 LTE, 2 Wi-Fi, 1 BT, 1 GPS, 15ft cable, Black
	PRO8BS4L2WBG15BS	4 LTE, 2 Wi-Fi, 1 BT, 1 GPS, 15ft cable, Black, Short Bolt
9:1	PRO9BS4L4WG15B	4 LTE, 4 Wi-Fi, 1 GPS, 15ft cable, Black
	PRO9BS4L4WG15BS	4 LTE, 4 Wi-Fi, 1 GPS, 15ft cable, Black, Short Bolt

Non-Standard Antennas

Configurations	Part Number	Description
4:1	PRO4BS4L01BS	4 LTE, 1ft cable, Black, Short Bolt
	PRO4BS4L01BS-NF	4 LTE, 1ft cable, Black, Short Bolt, N type Female
	PRO4BS4L01B	4 LTE, 1ft cable, Black
	PRO4BS4L01B-NF	4 LTE, 1ft cable, Black, N type Female
	PRO4BS4L01WS	4 LTE, 1ft cable, White, Short Bolt
	PRO4BS4L01WS-NF	4 LTE, 1ft cable, White, Short Bolt, N type Female
	PRO4BS4L01W	4 LTE, 1ft cable, White
	PRO4BS4L01W-NF	4 LTE, 1ft cable, White, N type Female
	PRO4BS4L15W	4 LTE, 15ft cable, White
	PRO4BS4L15WS	4 LTE, 15ft cable, White, Short Bolt
	PRO4BS2L14G15W	2 LTE, Band 14, GPS, 15ft cable, White
PRO4BS2L14G15WS	2 LTE, Band 14, GPS, 15ft cable, Short Bolt, White	
5:1	PRO5BS4LG01BS	4 LTE, 1 GPS, 1ft cable, Black, Short Bolt
	PRO5BS4LG01BS-NF	4 LTE, 1 GPS, 1ft cable, Black, Short Bolt, N type Female
	PRO5BS4LG01B	4 LTE, 1 GPS, 1ft cable, Black
	PRO5BS4LG01B-NF	4 LTE, 1 GPS, 1ft cable, Black, N type Female
	PRO5BS4LG01WS	4 LTE, 1 GPS, 1ft cable, White, Short Bolt
	PRO5BS4LG01WS-NF	4 LTE, 1 GPS, 1ft cable, White, Short Bolt, N type Female
	PRO5BS4LG01W	4 LTE, 1 GPS, 1ft cable, White
	PRO5BS4LG01W-NF	4 LTE, 1 GPS, 1ft cable, White, N type Female
	PRO5BS4LG15BS	4 LTE, 1 GPS, 15ft cable, Black, Short Bolt
	PRO5BS4LG15B	4 LTE, 1 GPS, 15ft cable, Black
	PRO5BS4LG15WS	4 LTE, 1 GPS, 15ft cable, White, Short Bolt
PRO5BS4LG15W	4 LTE, 1 GPS, 15ft cable, White	



Non-Standard Antennas (Continued)

Configurations	Part Number	Description
6:1	PRO6BS2L142WG15W	2 LTE, Band 14, 2 Wi-Fi, 1 GPS, 15ft cable, White
	PRO6BS2L142WG15WS	2 LTE, Band 14, 2 Wi-Fi, 1 GPS, 15ft cable, Short Bolt, White
7:1	PRO7BS4L2WG01BS	4 LTE, 2 Wi-Fi, 1 GPS, 1ft cable, Black, Short Bolt
	PRO7BS4L2WG01BS-NF	4 LTE, 2 Wi-Fi, 1 GPS, 1ft cable, Black, Short Bolt, N type Female
	PRO7BS4L2WG01B	4 LTE, 2 Wi-Fi, 1 GPS, 1ft cable, Black
	PRO7BS4L2WG01B-NF	4 LTE, 2 Wi-Fi, 1 GPS, 1ft cable, Black, N type Female
	PRO7BS4L2WG01WS	4 LTE, 2 Wi-Fi, 1 GPS, 1ft cable, White, Short Bolt
	PRO7BS4L2WG01WS-NF	4 LTE, 2 Wi-Fi, 1 GPS, 1ft cable, White, Short Bolt, N type Female
	PRO7BS4L2WG01W	4 LTE, 2 Wi-Fi, 1 GPS, 1ft cable, White
	PRO7BS4L2WG01W-NF	4 LTE, 2 Wi-Fi, 1 GPS, 1ft cable, White, N type Female
	PRO7BS4L2WG15WS	4 LTE, 2 Wi-Fi, 1 GPS, 15ft cable, White, Short Bolt
PRO7BS4L2WG15W	4 LTE, 2 Wi-Fi, 1 GPS, 15ft cable, White	
8:1	PRO8BS4L2WBG01B	4 LTE, 2 Wi-Fi, 1 BT, 1 GPS, 1ft cable, Black
	PRO8BS4L2WBG01BS	4 LTE, 2 Wi-Fi, 1 BT, 1 GPS, 1ft cable, Black, Short Bolt
	PRO8BS4L2WBG01W	4 LTE, 2 Wi-Fi, 1 BT, 1 GPS, 1ft cable, White
	PRO8BS4L2WBG01WS	4 LTE, 2 Wi-Fi, 1 BT, 1 GPS, 1ft cable, White, Short Bolt
	PRO8BS4L2WBG15W	4 LTE, 2 Wi-Fi, 1 BT, 1 GPS, 15ft cable, White
PRO8BS4L2WBG15WS	4 LTE, 2 Wi-Fi, 1 BT, 1 GPS, 15ft cable, White, Short Bolt	
9:1	PRO9BS4L4WG01BS	4 LTE, 4 Wi-Fi, 1 GPS, 1ft cable, Black, Short Bolt
	PRO9BS4L4WG01BS-NF	4 LTE, 4 Wi-Fi, 1 GPS, 1ft cable, Black, Short Bolt, N type Female
	PRO9BS4L4WG01B	4 LTE, 4 Wi-Fi, 1 GPS, 1ft cable, Black
	PRO9BS4L4WG01B-NF	4 LTE, 4 Wi-Fi, 1 GPS, 1ft cable, Black, N type Female
	PRO9BS4L4WG01WS	4 LTE, 4 Wi-Fi, 1 GPS, 1ft cable, White, Short Bolt
	PRO9BS4L4WG01WS-NF	4 LTE, 4 Wi-Fi, 1 GPS, 1ft cable, White, Short Bolt, N type Female
	PRO9BS4L4WG01W	4 LTE, 4 Wi-Fi, 1 GPS, 1ft cable, White
	PRO9BS4L4WG01W-NF	4 LTE, 4 Wi-Fi, 1 GPS, 1ft cable, White, N type Female
PRO9BS4L4WG15WS	4 LTE, 4 Wi-Fi, 1 GPS, 15ft cable, White, Short Bolt	
PRO9BS4L4WG15W	4 LTE, 4 Wi-Fi, 1 GPS, 15ft cable, White	

Note: SMA connectors have a max torque of 3-5 inch lbs.

Hardware Accessories

Accessory	Part Number
Pole-mount bracket (makes antenna a fixed application)	PTA0149H
Magnetic mount- black	PTA0329
Star Washer	PTA0257
Ground plane with adhesive back, 20in x 20in, can be cut to size	PTA0587



MobileMustHave
MOBILE LIFESTYLE SOLUTIONS



Part Number Key

Part number example of a 7:1 Belgian Shepherd antenna, black: PRO7BS4L2WG15B

Description	Abbreviation	Part Number
All PRO Series	PRO	PRO
Number of antennas in housing/configuration	7:1	PRO7
Antenna abbreviation for Belgian Shepherd	BS	PRO7BS
Number of LTE Elements	# L	PRO7BS4L
Number of Wi-Fi Elements	#W	PRO7BS4L2W
Number of GPS Elements (usually only 1 GPS per antenna, therefore we simply list G and no number)	G	PRO7BS4L2WG
Cable length measured in feet: 01 = 1', 15 = 15'	01, 15, etc,	PRO7BS4L2WG15
Radome Color - B for Black, W for White	B or W	PRO7BS4L2WG15B
1.25" bolt is standard, leave blank. Add S for short bolt., 0.6"	S	PRO7BS4L2WG15BS
If SMA connector, simply leave blank		PRO7BS4L2WG15B
N type female connector	NF	PRO7BS4L2WG01B-NF

Custom connectors and cable kits are available. Please contact us for more information.



MobileMustHave.com
info@mobilemusthave.com
 Chat with us at MobileMustHave.com