

Peplink Balance 310X

Enterprise SD-WAN router for Medium Branches



Affordable High Performance

The Balance 310X uses all GE ports and offers a routing throughput of 2.5 Gbps. It provides all the connectivity needed to support small and medium sized business operations.

2.5 Gbps
Of Throughput



Unbreakable Connectivity with LTE

The Balance 310X provides built-in LTE for seamless failover. Patented SpeedFusion technology combines multiple connections for jitter-free calls and high-speed transfers.

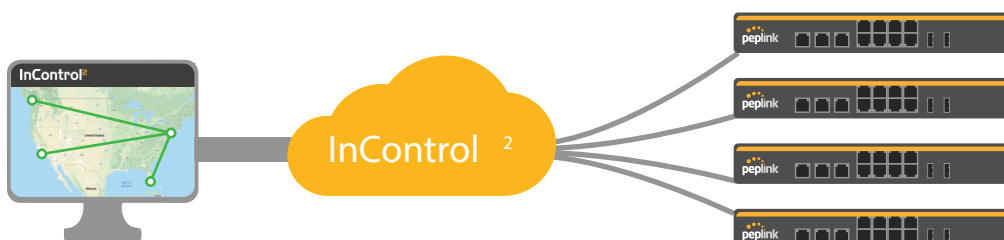


Rugged Industrial-Grade Design



The Balance 310X has a fanless design and a wide temperature range. Drop it into demanding environments and run it for years without worry.

Scalable Management



The Balance 310X comes with the InControl central management system. Easily centralize firewall rules, outbound policy, VLAN, device configurations and more.

Balance 310X



Specifications

WAN Interface	1x Embedded LTEA-PRO Modem with Redundant SIM Slots 2x 10/100/1000M Ethernet 2x USB 2.0 Interface	Power Consumption	30W (max.)
LAN Interface	9x 10/100/1000M Ethernet	Dimensions	1.7 x 11.5 x 7.0 inches 43 x 292 x 177 mm
Router Throughput	2.5 Gbps	Weight	7.28 pounds 3.3 kg
PepVPN Throughput (No Encryption)	600 Mbps	Operating Temperature	-40° – 149 °F -40° – 65 °C
PepVPN Throughput (256-bit AES)	500 Mbps	Humidity	15% – 95% (non-condensing)
Cellular Data Rate® (Downlink/Uplink)	CAT-12: 600 Mbps/150 Mbps CAT-20: 2 Gbps/211 Mbps	Certifications	FCC, CE, RoHS
Recommended Users	50-500	Package Content	Balance 310X, 1x PSU 24V 2.5A (ACW-647), 2x or 4x LTE/5G Antennas (ACW-234) 1x GPS Antenna (ACW-232), Ear L-Mounts kit (ACW-513), Rubber Foot Pad Set, Grounding Cable
Cellular and GPS Antenna Connectors	2x SMA Antenna Connectors (for CAT-12) 4x SMA Antenna Connectors (for CAT-20) 1x SMA GPS Antenna Connector	Warranty	1-year Limited Warranty
Power Input	Power Din DC: 12V – 30V		

Ordering information

Product Code	Carrier/ Category	Embedded Modems	4G Bands	3G Bands
BPL-310X-LTEA-R-T	America / CAT-12	1	B1, B2, B3, B4, B5, B7, B8, B9, B12, B13, B14, B18, B19, B20, B26, B29, B30, B32, B41, B42, B43, B46, B48, B66	B1, B2, B4, B5, B6, B8, B9, B19
BPL-310X-LTEA-D-T	APAC & EMEA / CAT-12	1	B1, B2, B3, B4, B5, B7, B8, B9, B12, B13, B14, B17, B18, B19, B20, B21, B25, B26, B28, B29, B30, B32, B38, B39, B40, B41, B66	B1, B2, B3, B4, B5, B8, B9, B19
BPL-310X-GLTE-S-T	Global / FirstNet / CAT-20	1	B1, B2, B3, B4, B5, B7, B8, B12, B13, B14, B17, B18, B19, B20, B25, B26, B28, B29, B30, B32, B34, B38, B39, B40, B41, B42, B46 (LAA), B48, B66, B71	B1, BHSPA+/WCDMA: B1, B2, B3, B4, B5, B6, B8, B9, B19

®Theoretical maximum data rates

Expansion Module for B310X



Specifications

Interface	1x Embedded Cellular Modems with Redundant SIM Slots	Dimensions	0.9 x 11.5 x 3.5 inches 22 x 292 x 88 mm
Antenna Connectors	4x SMA Antenna Connectors, 1x SMA GPS Antenna Connector	Weight	2.2 pounds 1 kg
Cellular Data Rate® (Downlink/Uplink)	CAT-20: 2 Gbps/211 Mbps		

Ordering information

Product Code	Description	Embedded Modems	Carrier/Categories	4G Bands	3G Bands
EXM-310X-GLTE-S	Expansion Module for B310X with 1x LTE-A Pro (CAT-20) modem	1	Global / CAT-20	B1, B2, B3, B4, B5, B7, B8, B12, B13, B14, B17, B18, B19, B20, B25, B26, B28, B29, B30, B32, B34, B38, B39, B40, B41, B42, B46 (LAA), B48, B66, B71	HSPA+/WCDMA: B1, B2, B3, B3, B4, B5, B6, B8, B9, B19

®Theoretical maximum data rates