



18v LXT® Lithium-Ion Brushless Cordless Jig Saw, Tool Only

Model XVJ02Z

UP TO 45% FASTER CUTTING*

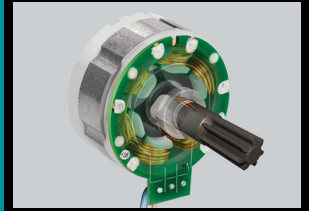
- Makita-built brushless motor with 3 orbital settings plus straight cutting delivers faster and more accurate cuts in a variety of materials
- Variable 6-speed control dial (800-3,500 SPM) enables user to match the speed to the application
- Efficient BL™ Brushless motor is electronically controlled to optimize battery energy use for up to 50% longer run time per charge
- The BL™ Brushless Motor eliminates carbon brushes, enabling the BL™ Motor to run cooler and more efficiently for longer life

*compared to XVJ03



LXT
LITHIUM-ION

PERFORMANCE



BL™ motor is electronically controlled to optimize battery energy use for up to 50% longer run time

SPEED



Variable 6-speed control dial (800-3,500 SPM) enables user to match the speed to the application

CONVENIENCE



"Tool-less" blade change system allows for faster blade installation and removal

COMFORT



Weighs only 5.8 lbs. with battery (battery not included) for reduced operator fatigue

CUSTOM CUTTING GOES CORDLESS

18v LXT® Lithium-Ion Brushless Cordless Jig Saw, Tool Only

Model XVJ02Z

FEATURES & BENEFITS

- The electronically-controlled BL™ Brushless Motor efficiently uses energy to match torque and SPM to the changing demands of the application
- "Tool-less" blade change system allows for faster blade installation and removal for increased productivity
- Large 2-finger variable speed trigger with lock-on button for added convenience
- Heavy gauge aluminum base for smooth, accurate cutting and added durability
- Dual L.E.D. lights illuminate the work area
- Weighs only 5.8 lbs. with battery (battery not included) for reduced operator fatigue
- Compact and ergonomic design at only 10-1/2" long
- Rubberized soft grip handle provides increased comfort on the job
- Built-in dust blower clears the line of cut for increased accuracy
- Equipped with Star Protection Computer Controls™ to protect against overloading, over-discharging and over-heating
- Built-in dust blower clears the line of cut for increased accuracy
- Rapid Optimum Charger communicates with the battery's built-in chip throughout the charging process to optimize battery life by actively controlling current, voltage and temperature (battery and charger sold separately)
- Makita technology delivers category-leading charge time so the battery spends more time working and less time sitting on the charger (battery and charger sold separately)
- Only use genuine Makita batteries and chargers

STANDARD EQUIPMENT

- Tool Only (battery and charger not included)
- Jig Saw Blade

SPECIFICATIONS

Length of Stroke	1"
Max Cutting Capacity at 90° (aluminum)	25/32"
Max Cutting Capacity at 90° (mild steel)	3/8"
Max. Cutting Capacity at 90° (wood)	5-5/16"
Strokes Per Minute	800 - 3,500 SPM
Blade Shank	T-shank
Battery	18V LXT® Lithium-Ion
Net weight	5.8 lbs. w/battery
UPC code	088381-658034



Model XVJ02Z



OPTIONAL ACCESSORIES

- Rip Fence (164113-2)

- Wood and Plastics Blades (792470-4)

- Thin Materials Blades (792466-5)


Makita offers a wide variety of accessories. For a complete listing, please refer to the Makita General Catalog or visit our website at makitatools.com, or call 1-800-4MAKITA.

All specifications subject to change without prior notice. All models and accessories subject to stock on hand.
The Makita Teal Color is the trade dress of Makita Corporation and is protected under common law and registered with the U.S. Patent and Trademark Office
NTF-1214 MA-4705-14