



7-1/4" Circular Saw

Model HS7600

WELL-BALANCED AND LIGHTWEIGHT (8.6 LBS.)

- Powerful 10.5 AMP motor deliver 5,200 RPM for performance and job site durability
- Large cutting capacity (2-1/2" at 90°, 1-5/8" at 45°)
- Well-balanced and lightweight (8.6 lbs.) for superior handling and performance
- Lower guard design improves performance when making bevel and narrow cuts
- Heavy gauge aluminum wraparound base engineered for improved durability and straighter cuts

CONVENIENCE



Well-balanced and lightweight (8.6 lbs.) for superior handling

POWER



10.5 AMP

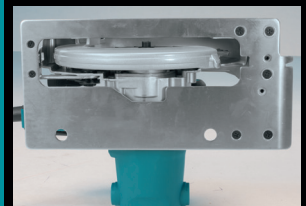
Powerful 10.5 AMP motor delivers 5,200 RPM for performance and job site durability

PERFORMANCE

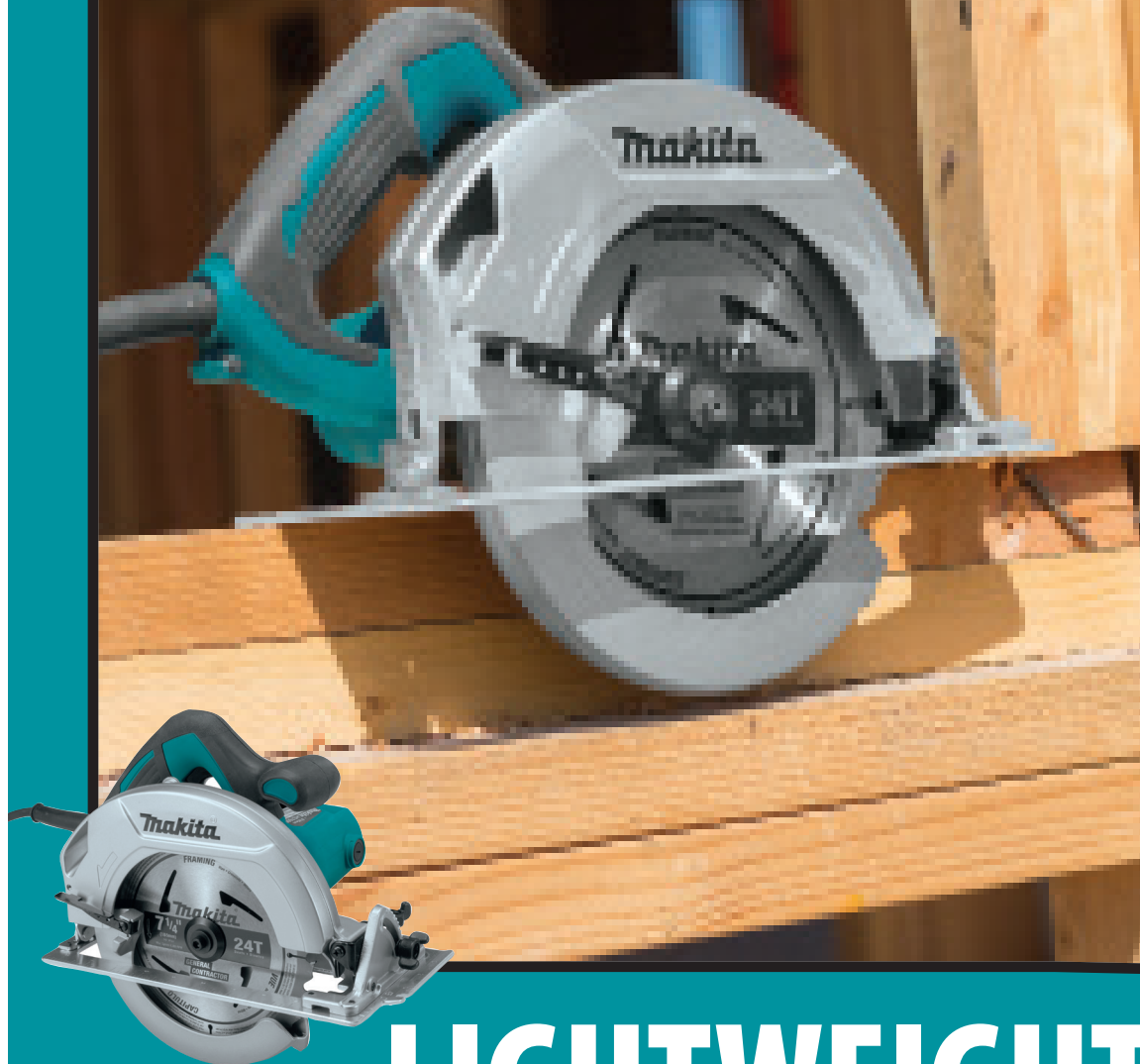


Lower guard design improves performance when making bevel and narrow cuts

DURABILITY



Heavy gauge aluminum wraparound base engineered for improved durability and straighter cuts



LIGHTWEIGHT

7-1/4" Circular Saw

Model HS7600

FEATURES & BENEFITS

- Powerful 10.5 AMP motor deliver 5,200 RPM for performance and job site durability
- Large cutting capacity (2-1/2" at 90°, 1-5/8" at 45°)
- Well-balanced and lightweight (8.6 lbs.) for superior handling and performance
- Lower guard design improves performance when making bevel and narrow cuts
- Heavy gauge aluminum wraparound base engineered for improved durability and straighter cuts
- Bevel cuts 0°-45° for the most common cutting applications
- Large and easy-to-read markings on base for more precise cutting
- Flat motor housing design for stability when changing the blade
- Ergonomic rubberized front grip and handle provided added comfort
- Conveniently located shaft and lock for easy blade replacement
- Blade wrench stores on the saw for convenient blade changes
- Ideal for framers, roofers, carpenters and general contractors



STANDARD EQUIPMENT

- 7-1/4" carbide tipped blade - 24T (D-45989)
- Hex wrench (783217-7)

SPECIFICATIONS

Blade diameter		7-1/4"
Arbor		5/8"
Max. cutting capacity	at 90°	2-1/2"
	at 45°	1-5/8"
No load speed		5,200 RPM
Watts out		1,400
AMPS		10.5
Overall length		12-1/8"
Net weight		8.6 lbs.
Shipping weight		11.9 lbs.
UPC code		088381-683593



Model HS7600



OPTIONAL ACCESSORIES

- Carbide-tipped saw blades

Diameter	Blade Type	No. Teeth	Arbor	Grind	Part #	Model
7-1/4"	General Contractor	16T	5/8"	ATB	A-90009-B-10 (10/pk)	
7-1/4"	General Contractor	24T	5/8"	ATB	D-45989-10 (10/pk)	
7-1/4"	Framing	24T	5/8"	"M"	A-94839-10 (10/pk)	5007F, 5007FA, 5007NK, 5007MG
7-1/4"	Ultra-Coated Framing	24T	5/8"	"M"	A-94530-10 (10/pk)	5007MGA, 5007NHK, 5277NB,
7-1/4"	FMF - Ultra-Coated Framing	24T	5/8"	"M"	A-95928-10 (10/pk)	5377MG, 5740NB, 5477NB,
7-1/4"	Fine Crosscutting	40T	5/8"	ATB	721251-A	HS7600



Makita offers a wide variety of accessories. For a complete listing, please refer to the Makita General Catalog or visit our website at makitatools.com, or call 1-800-4MAKITA.

All specifications subject to change without prior notice. All models and accessories subject to stock on hand.

The Makita Teal Color is the trade dress of Makita Corporation and is protected under common law and registered with the U.S. Patent and Trademark Office NTF-1214 MA4571-14