

# Rocky

With a chunky hand tufted loop pile, the Rocky rug range is thick and bold. Rocky perfectly adds texture and depth to a room and creates an ambient warmth and cosiness to any space. Manufactured in New Zealand from 100% New Zealand wool, the Rocky range is durable, hard wearing and soft underfoot.

Rocky is part of The Jordan Made to Order Rug Collection. Offering a selection of customisable premium locally made, 100% New Zealand wool rugs, all produced on a made to order basis. With four unique textural qualities, offered in a selection of Jordan signature colours and available in rectangular, square and round profiles. The range is available in a selection of standard sizes or available for customisation. If you would like to find out more about customising, please contact your closest showroom.

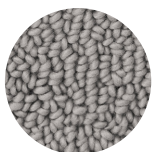
## Product Details

**Pile Composition** 100% New Zealand wool  
**Manufacture Details** Hand tufted  
**Country of Manufacture** New Zealand  
**Pile Height** 15 - 18 mm  
**Sizes Available** 200 x 300cm, 250 x 350cm, 300 x 400cm, Custom Size & Custom Round Size  
**Care** See Jordan rug maintenance guide for details. Each rug is handmade and may vary slightly in texture, colour & pattern and size tolerance of 2-3%.

## Available Colours



Acorn



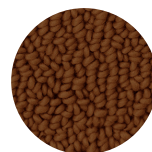
Ash



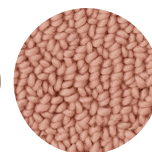
Birch



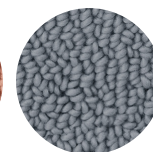
Caper



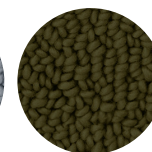
Cedar



Clay



Fog



Moss



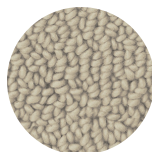
Mulberry



Natural



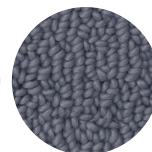
Olivine



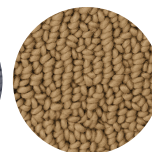
Oyster



Slate



Steel



Syrup

#### Custom Sizing

As part of the Jordan Made to Order Collection, we offer custom size rug options. This service is only available in-store via our sales reps. This allows our customers to tailor and specify the size of the rug, to fit perfectly in their desired space. Custom rugs will have a lead time of 4 - 7 weeks + local freight lead time.

For more information on custom sizing please contact your local showroom.

#### Spot Cleaning

Treat any liquid spills immediately. Place a clean cloth or unprinted paper towel directly on the liquid to absorb the spill. Following this use a clean cloth, dampened with water and dab the affected area, do not follow a circular motion, simply dab and blot. Absorb any excess moisture after cleaning with a clean dry cloth or towel. For dirt marks, such as soil, simply allow the soil to dry and vacuum. If spills or marks remain, contact a professional rug cleaning specialist.

#### Professional Cleaning

After time your rug will require professional cleaning. Any persistent or large stains will also require professional cleaning. Do NOT dry clean or steam clean rugs. Each Jordan rug is unique, and made of different fibres, we recommend contacting a professional rug cleaner who specialises in hand made rugs or contact Jordan for a recommended specialist cleaner.

#### Shedding & Loose Fibres

All rugs may shed and have loose fibres. Shedding will take place mostly in the 1-6 months of the rugs lifetime, but will slow over time. High traffic areas may always have a small amount of shedding. Simply vacuum any shedding fibres. For loose threads or ends - do not pull, simply clip them carefully with fabric scissors.

#### Care & Maintenance

The positioning of your rug will have an effect on the longevity and appearance of your rug over time. Avoid direct and continuous exposure to sunlight. Vacuum regularly to prevent dust and crumbs from settling into the pile. Rotate rug occasionally to equalize wear.