



Andy Bed

Gentle by nature, Andy's softly rounded form creates a refined elegance. Made to order, the range includes single, double, queen and king beds.

Andy Bed comes in a range of sizes, the Jordan website will allow you to select your preference then further customise fabrics and finishes.

Available Materials

- Fabric
- Timber

Specifications

Crafted

Australian made since 1987, our furniture takes shape at our Design + Manufacturing HQ in Melbourne.

Environmental

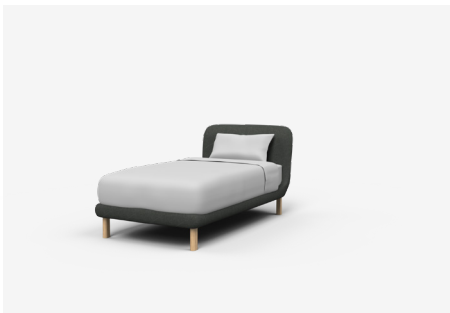
Our foams are all GECA certified and timber is sourced from sustainably managed forests.

Warranty

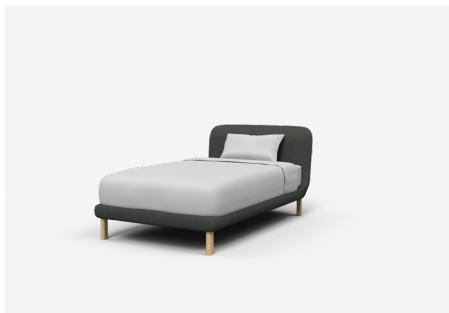
Made to last, our beds are covered by a 10 year structural warranty.

Beds

Floor to Slat — 276H



ADB113 — 1130L x 2180W x 990H (mm) | Single
44L x 86W x 39H (inches)



ADB130 — 1300L x 2330W x 990H (mm) | King Single
51L x 92W x 39H (inches)



ADB162 — 1620L x 2180W x 990H (mm) | Double
64L x 86W x 39H (inches)



ADB178 — 1780L x 2330W x 990H (mm) | Queen
70L x 92W x 39H (inches)



ADB208 — 2080L x 2330W x 990H (mm) | King
82L x 92W x 39H (inches)